



June 2010
Standing Reports



RESERVATIONS ACTIVITY REPORT North Lake Tahoe

Destination: North Lake Tahoe

Period: Bookings as of May 31, 2011

Executive Summary

Data based on a sample of up to 11 properties in the North Lake Tahoe destination, representing up to 1,721 Units (MTRIP Census¹)

		2010/11	2009/10	Year over Year % Diff
a. Last Month Performance: Current YTD vs. Previous YTD				
North Lake Tahoe Occupancy for last month (May) changed by (14.3%)	Occupancy (May)	28.3%	24.8%	14.3%
North Lake Tahoe Average Daily Rate for last month (May) changed by (1.2%)	ADR (May)	\$146	\$145	1.2%
North Lake Tahoe RevPAR for last month (May) changed by (15.6%)	RevPAR (May)	\$41	\$36	15.6%
b. Next Month Performance: Current YTD vs. Previous YTD				
North Lake Tahoe Occupancy for next month (June) changed by (11.9%)	Occupancy (June)	33.4%	29.8%	11.9%
North Lake Tahoe Average Daily Rate for next month (June) changed by (0.8%)	ADR (June)	\$181	\$180	0.8%
North Lake Tahoe RevPAR for next month (June) changed by (12.8%)	RevPAR (June)	\$61	\$54	12.8%
c. Historical 6 Month Actual Performance: Current YTD vs. Previous YTD				
North Lake Tahoe Occupancy for the prior 6 months changed by (4.6%)	Occupancy	44.7%	42.7%	4.6%
North Lake Tahoe Average Daily Rate for the prior 6 months changed by (1.8%)	ADR	\$234	\$230	1.8%
North Lake Tahoe RevPAR for the prior 6 months changed by (6.5%)	RevPAR	\$105	\$98	6.5%
d. Future 6 Month On The Books Performance: Current YTD vs. Previous YTD				
North Lake Tahoe Occupancy for the upcoming 6 months changed by (13.4%)	Occupancy	20.7%	18.2%	13.4%
North Lake Tahoe Average Daily Rate for the upcoming 6 months changed by (2.0%)	ADR	\$201	\$198	2.0%
North Lake Tahoe RevPAR for the upcoming 6 months changed by (15.6%)	RevPAR	\$42	\$36	15.6%
e. Incremental Pacing - % Change in Rooms Booked last Calendar Month: May, 31, 2011 vs. Previous Year				
Rooms Booked during last month (May, 2011) compared to Rooms Booked during the same period last year (May, 2010) for all arrival dates has changed by (-8.8%)	Booking Pace (May)	6.7%	7.4%	-8.8%

¹ **MTRIP Census:** Total number of rooms reported by participating MTRIP properties as available for short-term rental in the reporting month. This number can vary monthly as inventories and report participants change over time.

^{**} **Destination Census:** The total number of rooms available for rental within the community as established by the Transient Inventory Study of July 2009 and adjusted for properties that have opened / closed since that time. This number varies infrequently as new properties start, or existing properties cease operations.

DESCRIPTION: The Reservation Activity Outlook Report tracks occupancy, average daily rate (ADR), and revenue per available room (RevPAR); the key metrics most of interest to lodging properties. The report combines the data sets of participating properties into a destination wide view that features three data sets (providing that sufficient information is available) including: i) current YTD occupancy, ii) last YTD occupancy, iii) last season's ending occupancy.

The Reservation Activity Outlook Report is generated on a monthly basis, usually for a 12 month subscription period, and is created from data provided by a group of properties participating in a cooperative manner, and representing a valid set of data as a result.

Report results are provided only to those properties who participate by submitting their data. Additionally, participating properties can order (on an a-la-carte basis) an individual report which shows the reservation activity of their property, measured against an aggregated set of competitive properties that they choose from amongst MTRIP's other participants.

As is the case in all MTRIP data, all information provided by individual properties is strictly confidential, except when aggregated with other data and indistinguishable as a result.

Copyright 2009-2011, MTRIP, LLC. All Rights Reserved. Information provided here is CONFIDENTIAL INFORMATION and is the exclusive property of MTRIP LLC. It is expressly not for reproduction, distribution publication or any other dissemination without the express written permission of MTRIP, LLC. Sample reports may be provided to interested persons, specifically for purposes of their evaluation of a potential subscription and are subject to Copyrights of this product. Data and Metrics represented on this report are representative of the Sample Properties only and may not be representative of the entire Community or Industry. Persons using this data for strategic purposes do so at their own risk and hold MTRIP harmless.

RESERVATIONS ACTIVITY REPORT

SECTION 1 - 12 MONTH ROLLING SUMMARY GRAPHS

2010/11 YTD (as of May 31, 2011) vs. 2009/10 YTD (as of May 31, 2010) vs. 2009/10 Historical

NOTE: This is not a forecast of bookings. Data presented in this report represents Occupancy on the books as of the date noted above

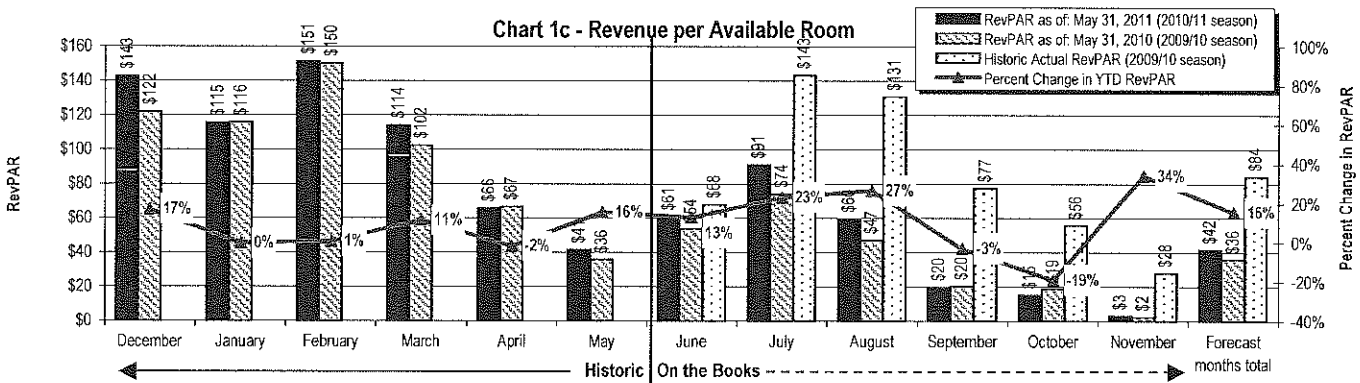
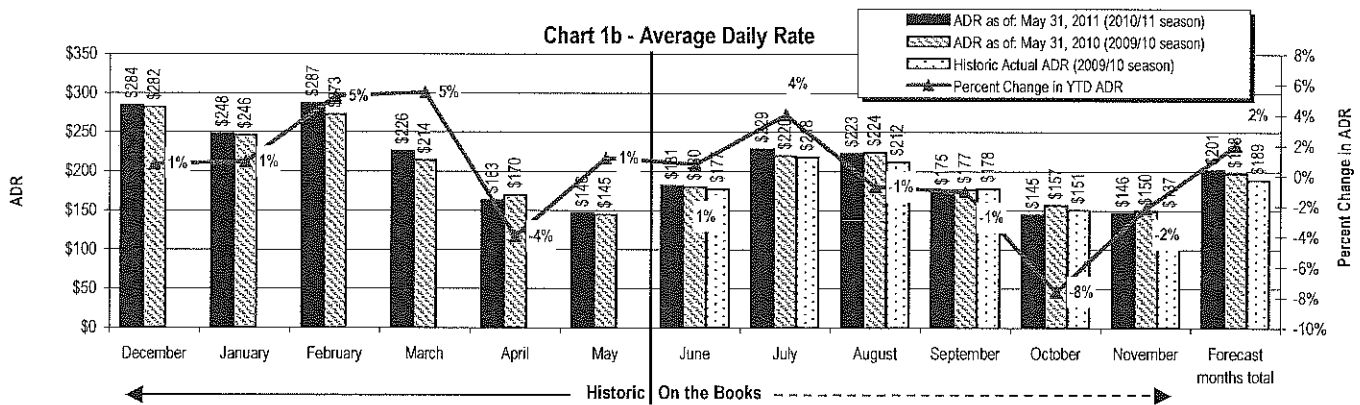
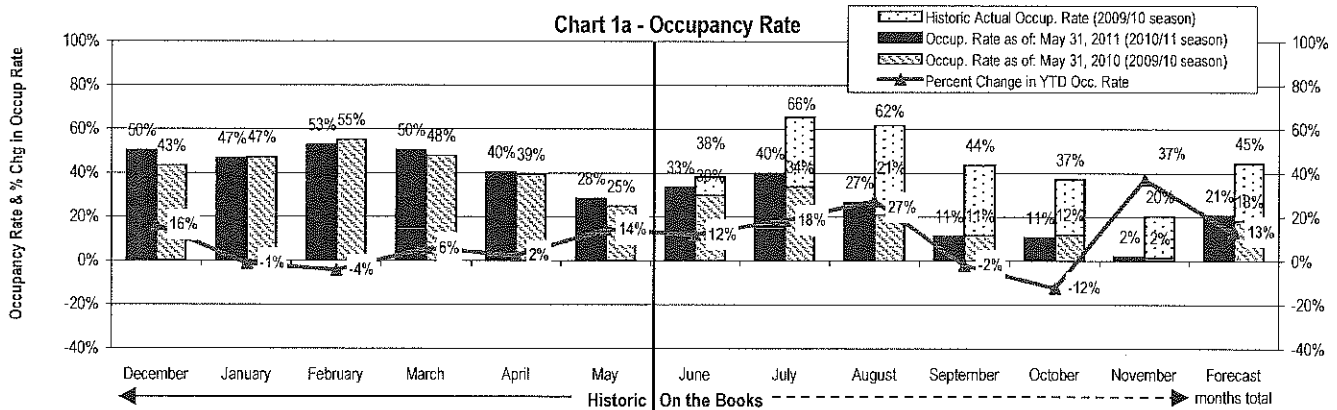
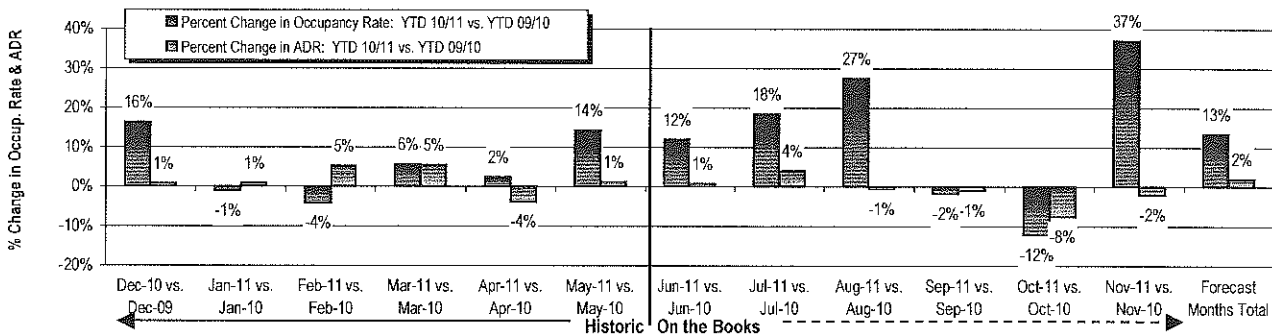


Chart 1d - Percent Change in YTD Occupancy Rate & ADR (2011 YTD vs. 2010 YTD)

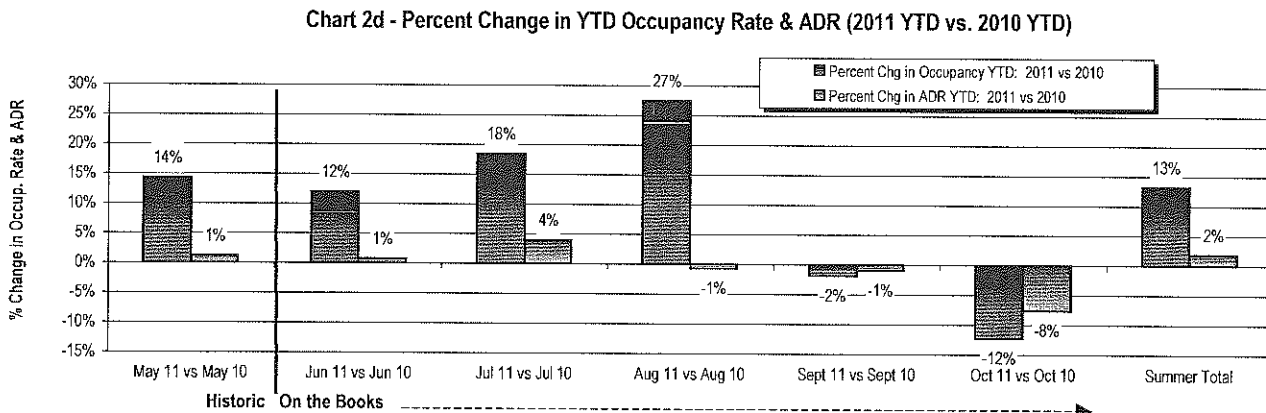
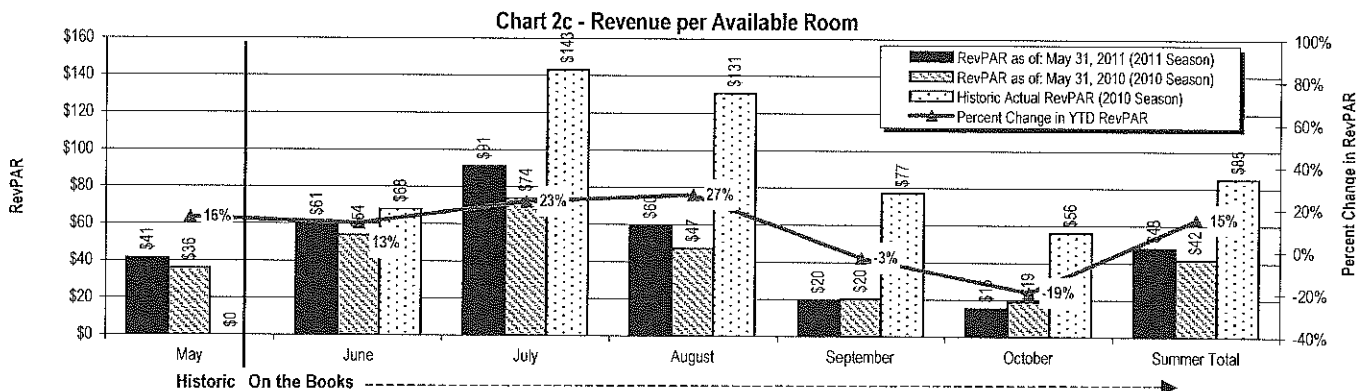
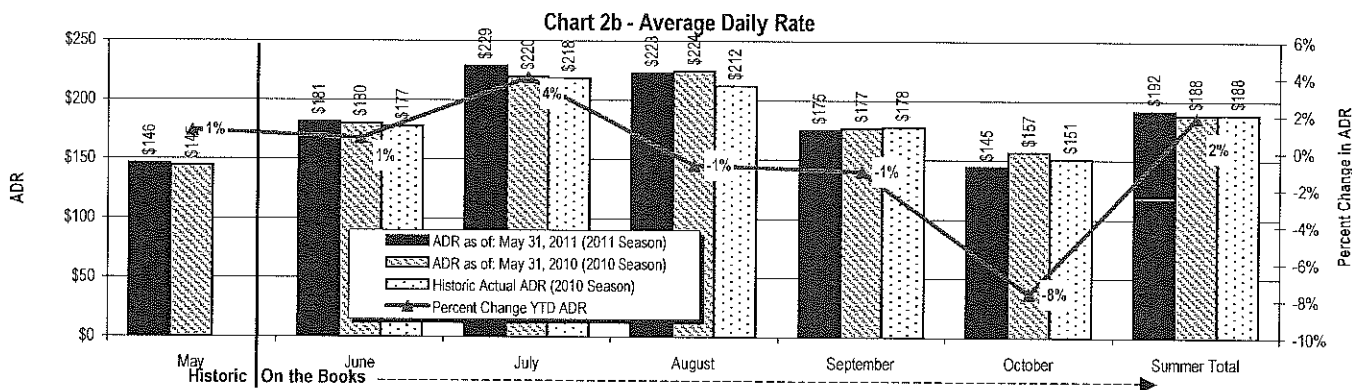
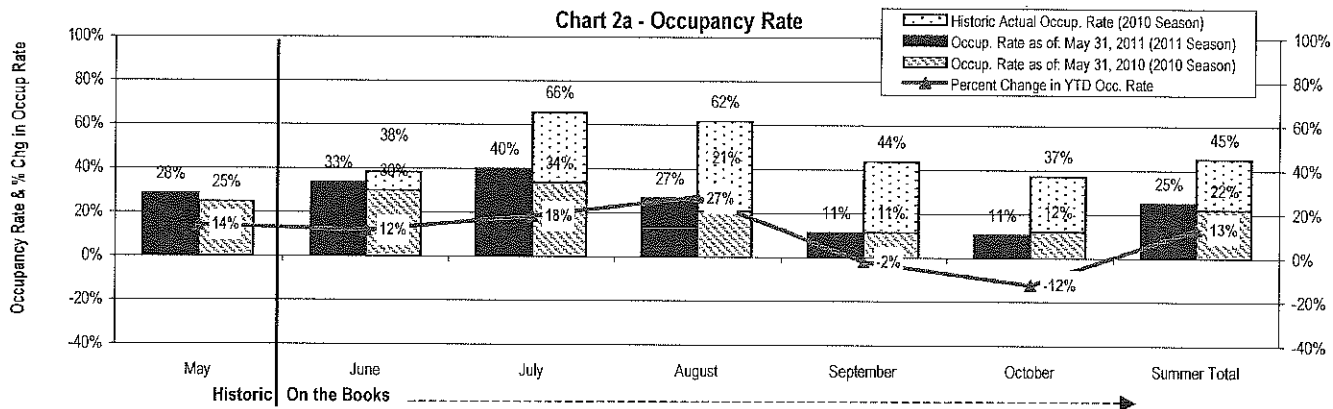


RESERVATIONS ACTIVITY REPORT

SECTION 2 - SUMMER SEASON SUMMARY GRAPHS

2011 YTD (as of May 31, 2011) vs. 2010 YTD (as of May 31, 2010) vs. 2010 Historical

NOTE: This is not a forecast of bookings. Data presented in this report represents Occupancy on the books as of the date noted above



RESERVATIONS ACTIVITY REPORT SECTION 3 - WINTER SEASON SUMMARY GRAPHS

2011/12 YTD (as of May 31, 2011) vs. 2010/11 YTD (as of May 31, 2010) vs. 2010/11 Historical
NOTE: This is not a forecast of bookings. Data presented in this report represents Occupancy on the books as of the date noted above

Chart 3a - Occupancy Rate

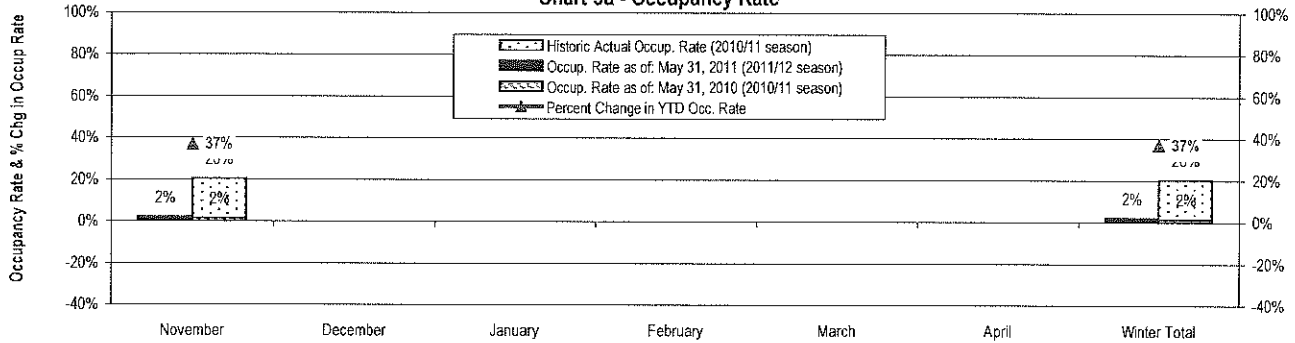


Chart 3b - Average Daily Rate

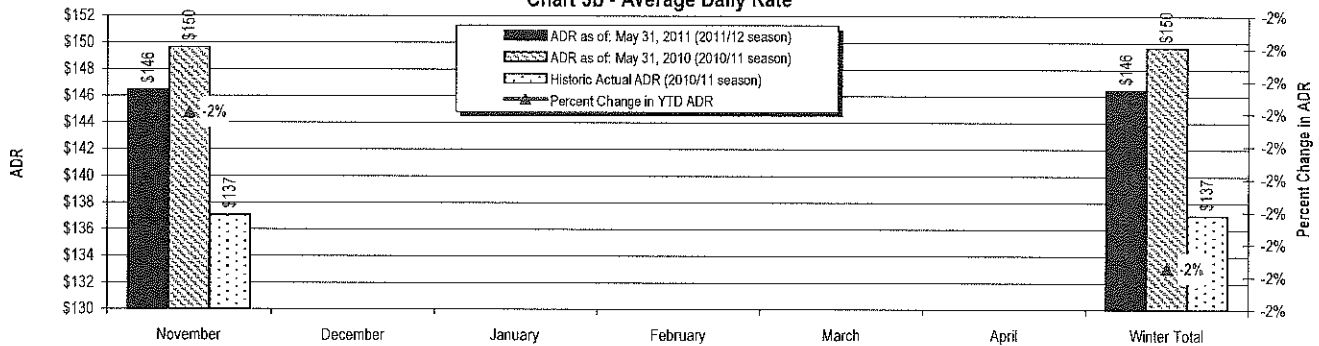


Chart 3c - Revenue per Available Room

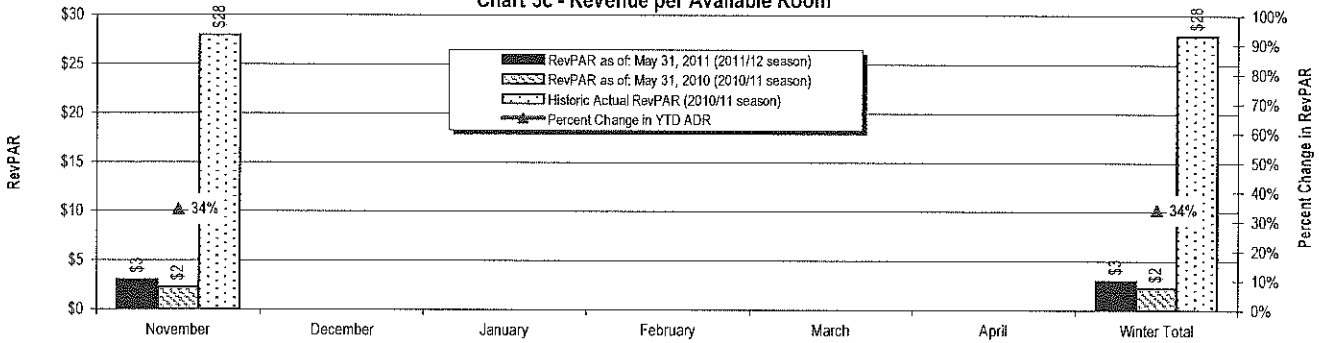
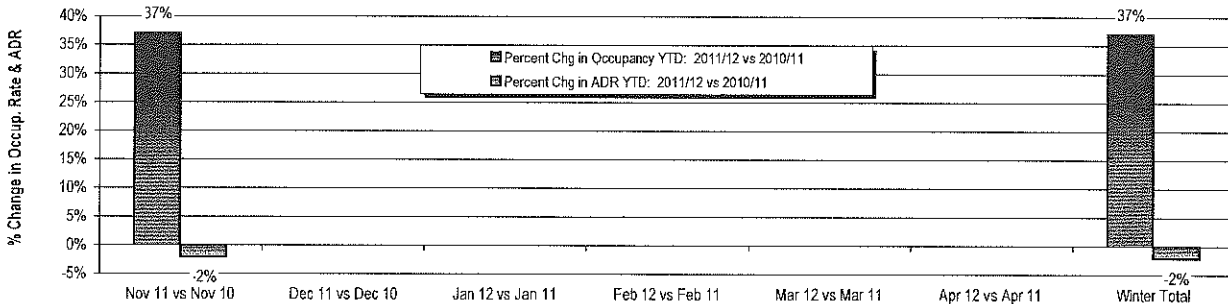


Chart 3d - Percent Change in YTD Occupancy Rate & ADR (2011/12 YTD vs. 2010/11 YTD)

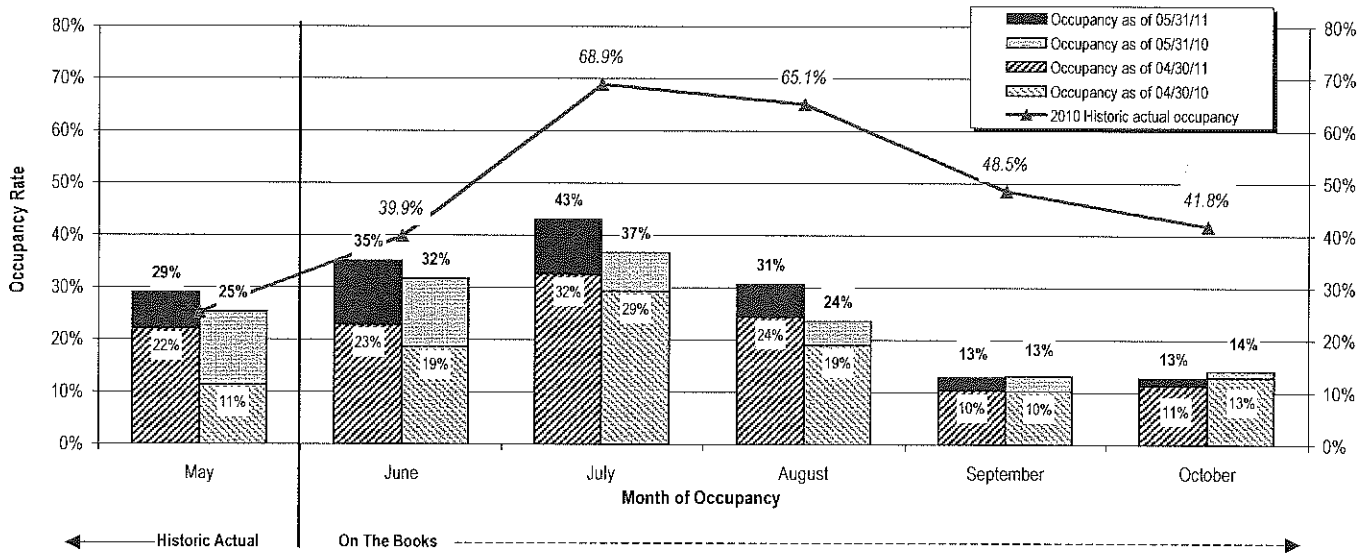


RESERVATIONS ACTIVITY REPORT SECTION 4 - FILL ANALYSIS

2011 Occupancy Pace as of May 31, 2011 and Apr. 30, 2011 versus same period 2010

NOTE: This is not a forecast of bookings. Data presented in this report represents Occupancy on the books as of the date noted above

Chart 4 - Year over Year Fill Analysis



Supporting Table for Chart 4* & Change in Incremental Fill

Month of Occupancy:	OCCUPANCY AS OF MAY 31			OCCUPANCY AS OF APR 30			INCREMENTAL OCCUP. BOOKED (i.e. FILL DURING MONTH JUST ENDED)		CHG IN INCREMENTAL OCCUP. BOOKED (i.e. CHANGE IN FILL)		2010 Historic actual occupancy
	Occupancy as of 05/31/11	Occupancy as of 05/31/10	Absolute Change	Occupancy as of 04/30/11	Occupancy as of 04/30/10	Absolute Change	Incremental occupancy booked during May, 2011	Incremental occupancy booked during May, 2010	Absolute Change in Incremental Fill	Percent Change in Incremental Fill**	
	May	29.0%	25.3%	3.7%	22.1%	11.3%	10.8%	6.9%	14.0%	-7.1%	
June	35.1%	31.7%	3.4%	22.8%	18.6%	4.1%	12.3%	13.0%	-0.7%	-5.4%	39.9%
July	43.0%	36.7%	6.3%	32.5%	29.3%	3.2%	10.5%	7.4%	3.1%	41.8%	68.9%
August	30.6%	23.6%	7.0%	24.4%	19.0%	5.4%	6.2%	4.6%	1.6%	35.2%	65.1%
September	12.9%	13.1%	-0.2%	10.4%	10.2%	0.2%	2.5%	2.9%	-0.4%	-14.5%	48.5%
October	12.8%	14.1%	-1.3%	11.3%	12.8%	-1.5%	1.4%	1.3%	0.1%	9.6%	41.8%
Total	27.4%	24.2%	3.2%	20.7%	16.8%	3.8%	6.7%	7.4%	-0.6%	-8.8%	47.8%

*Based on providing complete pacing data within a given month of occupancy only. Results may differ from those presented elsewhere in report if property set differs.

**Results for "percent change in incremental fill" indicate how room nights booked during the month just ended compare to room nights booked during the same month in the prior year, for occupancy in the month just ended and for the upcoming five months (as well as the six-month period in total). These results provide an indication of the degree to which booking activity occurring during the month just ended was greater or less than booking activity occurring in the same month a year ago - i.e. a measure of the strength of booking activity occurring during the month just ended.

RESERVATIONS ACTIVITY REPORT
SECTION 5A - SUPPORTING DATA TABLES
Bookings as of May 31, 2011

NOTE: This is not a forecast of bookings. Data presented in this report represents Occupancy on the books as of the date noted above

OCCUPANCY RATE		OCCUPANCY RATE: YTD 2010/11 VS. YTD 2009/10			Historic Actual Occup. Rate (2009/10 season)	# of Properties in Sample	
		Occup. Rate as of: May 31, 2011 (2010/11 season)	Occup. Rate as of: May 31, 2010 (2009/10 season)	Percent Change in YTD Occ. Rate			
Month of Occupancy (2010/11 & 2009/10)							
December	Historic Actual	50.2%	43.2%	16.3%	38.2%	11	
January		46.6%	47.1%	-1.1%		11	
February		52.8%	55.1%	-4.2%		11	
March		50.5%	47.7%	5.7%		11	
April		40.2%	39.2%	2.4%		11	
May		28.3%	24.8%	14.3%		11	
June	On the Books	33.4%	29.8%	11.9%		10	
July	On the Books	39.8%	33.6%	18.5%		65.6%	10
August		26.7%	21.0%	27.4%		61.7%	10
September		11.3%	11.5%	-1.9%		43.5%	10
October		10.5%	12.0%	-12.3%		37.1%	10
November		2.1%	1.5%	37.0%	20.4%	10	
Grand total		32.7%	30.5%	7.3%	43.6%	11	
Historic months total		44.7%	42.7%	4.6%	42.7%	11	
Forecast months total		20.7%	18.2%	13.4%	44.5%	10	

AVERAGE DAILY RATE		ADR: YTD 2010/11 VS. YTD 2009/10			Historic Actual ADR (2009/10 season)	# of Properties in Sample	
		ADR as of: May 31, 2011 (2010/11 season)	ADR as of: May 31, 2010 (2009/10 season)	Percent Change in YTD ADR			
Month of Occupancy (2010/11 & 2009/10)							
December	Historic Actual	\$284	\$282	0.8%	\$177	11	
January		\$248	\$246	0.9%		11	
February		\$287	\$273	5.2%		11	
March		\$226	\$214	5.5%		11	
April		\$163	\$170	-4.0%		11	
May		\$146	\$145	1.2%		11	
June	On the Books	\$181	\$180	0.8%		10	
July	On the Books	\$229	\$220	4.0%		\$218	10
August		\$223	\$224	-0.7%		\$212	10
September		\$175	\$177	-1.0%		\$178	10
October		\$145	\$157	-7.6%		\$151	10
November		\$146	\$150	-2.1%	\$137	10	
Grand total		\$224	\$220	1.6%	\$209	11	
Historic months total		\$234	\$230	1.8%	\$230	11	
Forecast months total		\$201	\$198	2.0%	\$189	10	

REVENUE PER AVAILABLE ROOM		REVPAR: YTD 2010/11 VS. YTD 2009/10			Historic Actual RevPAR (2009/10 season)	# of Properties in Sample	
		RevPAR as of: May 31, 2011 (2010/11 season)	RevPAR as of: May 31, 2010 (2009/10 season)	Percent Change in YTD RevPAR			
Month of Occupancy (2010/11 & 2009/10)							
December	Historic Actual	\$143	\$122	17.2%	\$91	11	
January		\$115	\$116	-0.2%		11	
February		\$151	\$150	0.8%		11	
March		\$114	\$102	11.5%		11	
April		\$66	\$67	-1.7%		11	
May		\$41	\$36	15.6%		11	
June	On the Books	\$61	\$54	12.8%		\$68	10
July	On the Books	\$91	\$74	23.2%		\$143	10
August		\$60	\$47	26.5%		\$131	10
September		\$20	\$20	-2.9%		\$77	10
October		\$15	\$19	-19.0%		\$56	10
November		\$3	\$2	34.1%	\$28	10	
Grand total		\$73	\$67	9.1%	\$91	11	
Historic months total		\$105	\$98	6.5%	\$98	11	
Forecast months total		\$42	\$36	15.6%	\$84	10	

RESERVATIONS ACTIVITY REPORT
SECTION 5B - SUPPORTING SUMMER DATA TABLES
Summer Bookings as of May 31, 2011

NOTE: This is not a forecast of bookings. Data presented in this report represents Occupancy on the books as of the date noted above

OCCUPANCY RATE		OCCUPANCY RATE: YTD 2011 VS. YTD 2010			Historic Actual Occup. Rate (2010 Season)
		Occup. Rate as of: May 31, 2011 (2011 Season)	Occup. Rate as of: May 31, 2010 (2010 Season)	Percent Change in YTD Occ. Rate	
Month of Occupancy (2011 & 2010)					
May	Historic Actual	28.3%	24.8%	14.3%	
June	On the Books	33.4%	29.8%	11.9%	38.2%
July		39.8%	33.6%	18.5%	65.6%
August		26.7%	21.0%	27.4%	61.7%
September		11.3%	11.5%	-1.9%	43.5%
October		10.5%	12.0%	-12.3%	37.1%
Summer Total		25.0%	22.1%	13.2%	45.2%

AVERAGE DAILY RATE		ADR: YTD 2011 VS. YTD 2010			Historic Actual ADR (2010 Season)
		ADR as of: May 31, 2011 (2011 Season)	ADR as of: May 31, 2010 (2010 Season)	Percent Change YTD ADR	
Month of Occupancy (2011 & 2010)					
May	Historic Actual	\$146	\$145	1.2%	
June	On the Books	\$181	\$180	0.8%	\$177
July		\$229	\$220	4.0%	\$218
August		\$223	\$224	-0.7%	\$212
September		\$175	\$177	-1.0%	\$178
October		\$145	\$157	-7.6%	\$151
Summer Total		\$192	\$188	1.9%	\$188

REVENUE PER AVAILABLE ROOM		REVPAR: YTD 2011 VS. YTD 2010			Historic Actual RevPAR (2010 Season)
		RevPAR as of: May 31, 2011 (2011 Season)	RevPAR as of: May 31, 2010 (2010 Season)	Percent Change in YTD RevPAR	
Month of Occupancy (2011 & 2010)					
May	Historic Actual	\$41	\$36	15.6%	\$0
June	On the Books	\$61	\$54	12.8%	\$68
July		\$91	\$74	23.2%	\$143
August		\$60	\$47	26.5%	\$131
September		\$20	\$20	-2.9%	\$77
October		\$15	\$19	-19.0%	\$56
Summer Total		\$48	\$42	15.4%	\$85

RESERVATIONS ACTIVITY REPORT
SECTION 5C - SUPPORTING WINTER DATA TABLES
Winter Bookings as of May 31, 2011

NOTE: This is not a forecast of bookings. Data presented in this report represents Occupancy on the books as of the date noted above

OCCUPANCY RATE		<u>OCCUPANCY RATE: YTD 2011/12 VS. YTD 2010/11</u>			
Month of Occupancy (2011/12 & 2010/11)		Occup. Rate as of: May 31, 2011 (2011/12 season)	Occup. Rate as of: May 31, 2010 (2010/11 season)	Percent Change in YTD Occ. Rate	Historic Actual Occup. Rate (2010/11 season)
November	On the Books	2.1%	1.5%	37.0%	20.4%
December					
January					
February					
March					
April					
Winter Total		2.1%	1.5%	37.0%	20.4%

AVERAGE DAILY RATE		<u>ADR: YTD 2011/12 VS. YTD 2010/11</u>			
Month of Occupancy (2011/12 & 2010/11)		ADR as of: May 31, 2011 (2011/12 season)	ADR as of: May 31, 2010 (2010/11 season)	Percent Change in YTD ADR	Historic Actual ADR (2010/11 season)
November	On the Books	\$146	\$150	-2.1%	\$137
December					
January					
February					
March					
April					
Winter Total		\$146	\$150	-2.1%	\$137

REVENUE PER AVAILABLE ROOM		<u>REVPAR: YTD 2011/12 VS. YTD 2010/11</u>			
Month of Occupancy (2011/12 & 2010/11)		RevPAR as of: May 31, 2011 (2011/12 season)	RevPAR as of: May 31, 2010 (2010/11 season)	Percent Change in YTD ADR	Historic Actual RevPAR (2010/11 season)
November	On the Books	\$3	\$2	34.1%	\$28
December					
January					
February					
March					
April					
Winter Total		\$3	\$2	34.1%	\$28



**MULTI-DESTINATION COMPARATIVE REPORT
North Lake Tahoe**

Destination: North Lake Tahoe

Period: Bookings as of May 31, 2011

Executive Summary

Overview Based on data from 15 reporting MTRIP Destinations (see Destination Listing at bottom of page 6)

	High	Low	Average	North Lake Tahoe
a. Last Month Occupancy: Industry-Wide High / Low and Average for Month vs North Lake Tahoe Occupancy				
Historic Actual Occupancy for Last Month	29.5%	4.2%	12.9%	28.3%
% Change in Historic Actual Occupancy for Last Month	37.5%	0.0%	7.5%	14.3%
b. Last Month ADR: Industry-Wide High / Low and Average for Month vs North Lake Tahoe ADR				
Historic Actual Average Daily Rate for Last Month	\$234	\$88	\$126	\$146
% Change in Historic Actual Average Daily Rate for Last Month	271.4%	-2.8%	2.5%	1.2%
c. Next Month Occupancy: Industry-Wide High / Low and Average for Month vs North Lake Tahoe Occupancy				
Occupancy On-The_Books for Next Month	43.7%	10.2%	24.7%	33.4%
% Change in Occupancy On-The-Books for Next Month	134.3%	0.9%	13.2%	11.9%
d. Last Month ADR: Industry-Wide High / Low and Average for Month vs North Lake Tahoe ADR				
Average Daily Rate On-The_Books for Next Month	\$305	\$108	\$172	\$181
% Change in Average Daily Rate On-The-Books for Next Month	10.4%	-3.9%	3.0%	0.8%

DESCRIPTION: The Multi Destination Comparative Report compares occupancy and average daily rate (ADR) between the Base Destination and all other MTRIP reporting destinations. ; In all cases, the Base Destination is represented on the far left of the tables and the far left of the charts. The Base Destination is differentiated on charts with a Red data series bar. All other Destinations are represented with a Green data series bar.

All data is sorted in descending order from highest to lowest and left to right, with the all destination average on the far right of the tables. All destination average is differentiated on charts by a blue line data set.

Individual destination data may be obtained through the Multi-Destination Comparative Enhanced report, available by contacting MTRIP at the address below

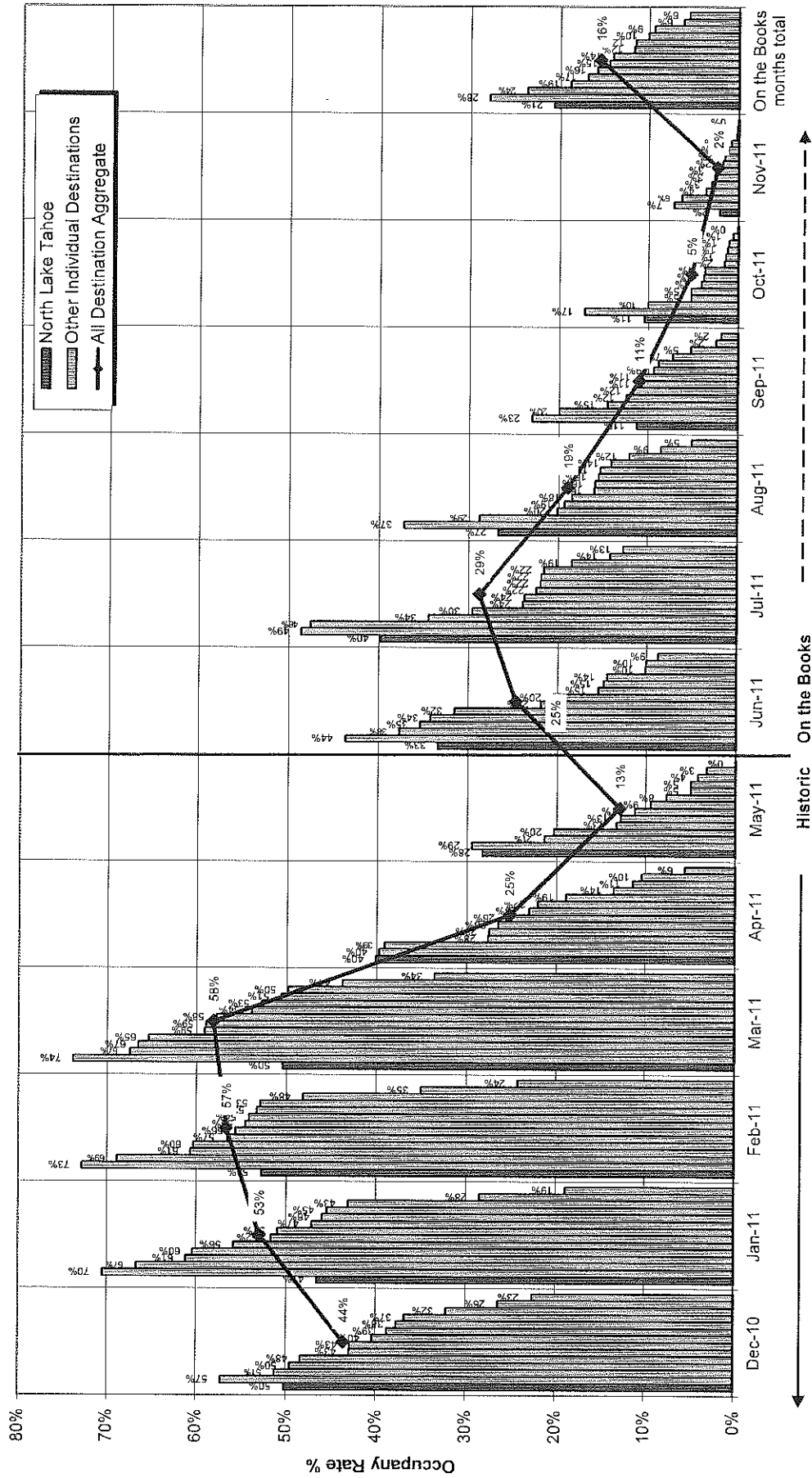
Copyright 2009-2011, MTRIP, LLC. All Rights Reserved. Information provided here is CONFIDENTIAL INFORMATION and is the exclusive property of MTRIP LLC. It is expressly not for reproduction, distribution publication or any other dissemination without the express written permission of MTRIP, LLC. Sample reports may be provided to interested persons, specifically for purposes of their evaluation of a potential subscription and are subject to Copyrights of this product. Data and Metrics represented on this report are representative of the Sample Properties only and may not be representative of the entire Community or Industry. Persons using this data for strategic purposes do so at their own risk and hold MTRIP harmless.

N-9

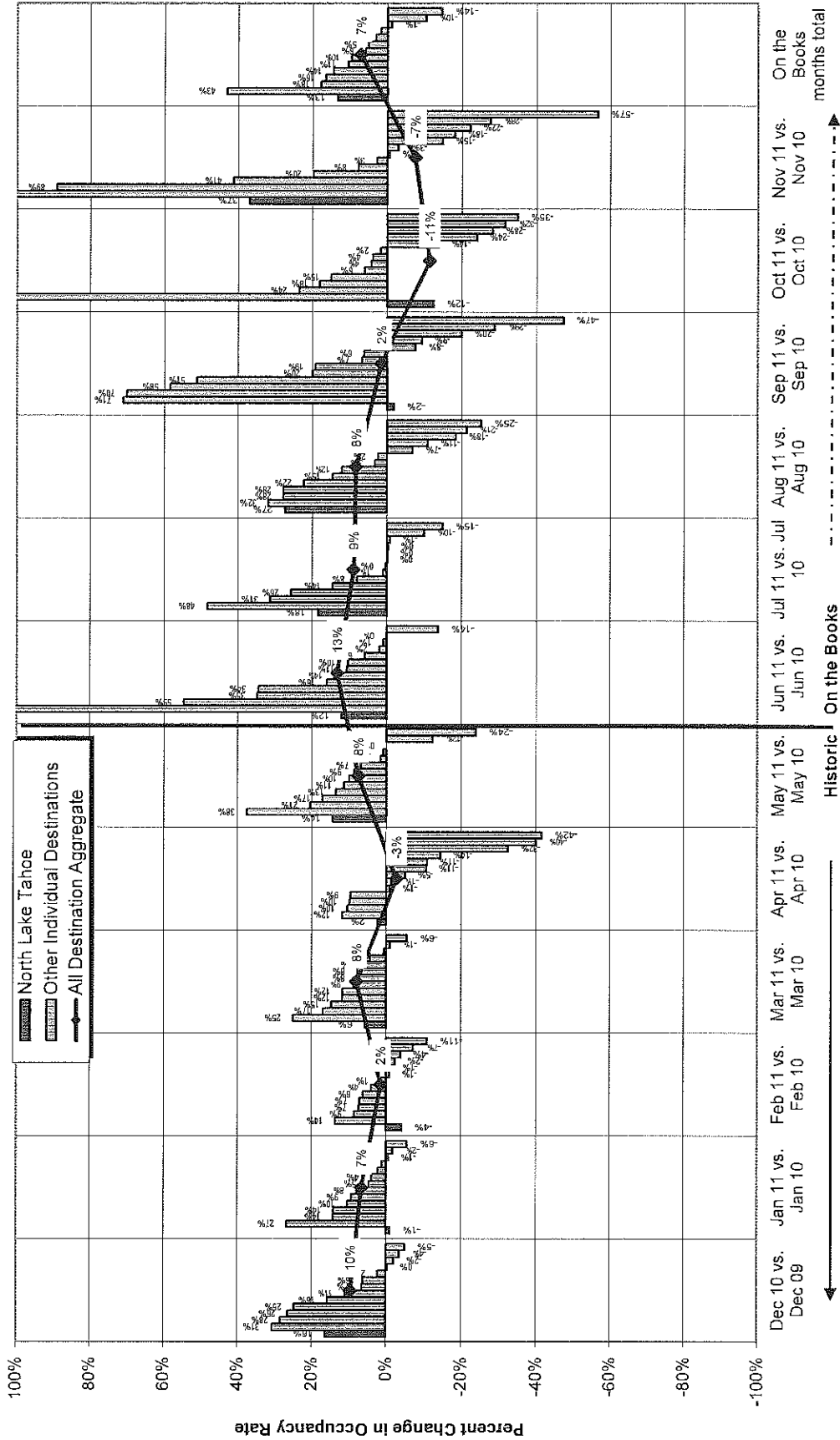
Occupancy Rate 2010/2011 Season as of May 31, 2011

Historic and Forecast Data

North Lake Tahoe vs All Individual Mtn Destinations & All Destination Aggregate



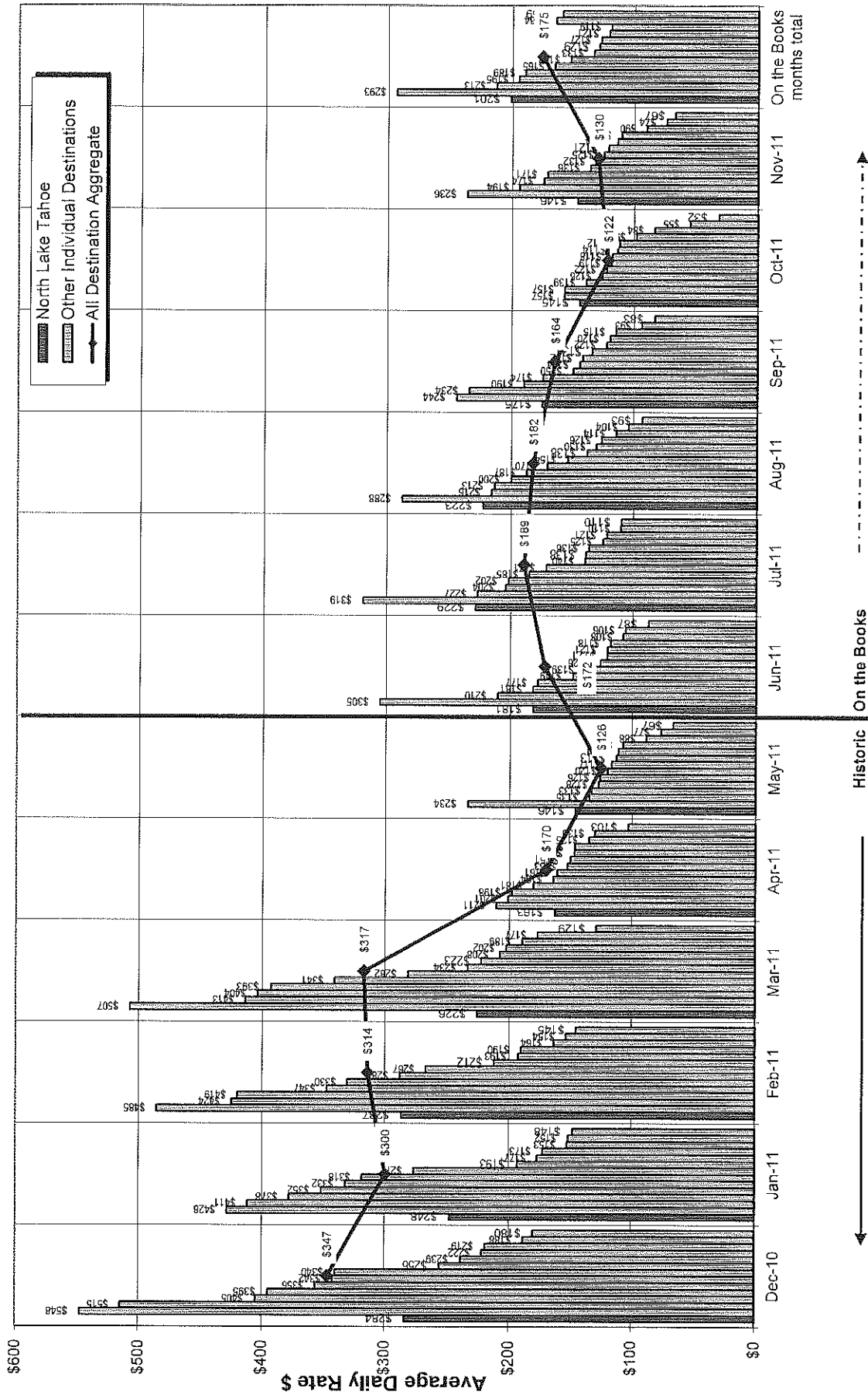
Percent Change in Occupancy Rate: 2010/2011 vs 2009/2010 as of May 31, 2011
 North Lake Tahoe vs All Individual Mtn Destinations & All Destination: Average



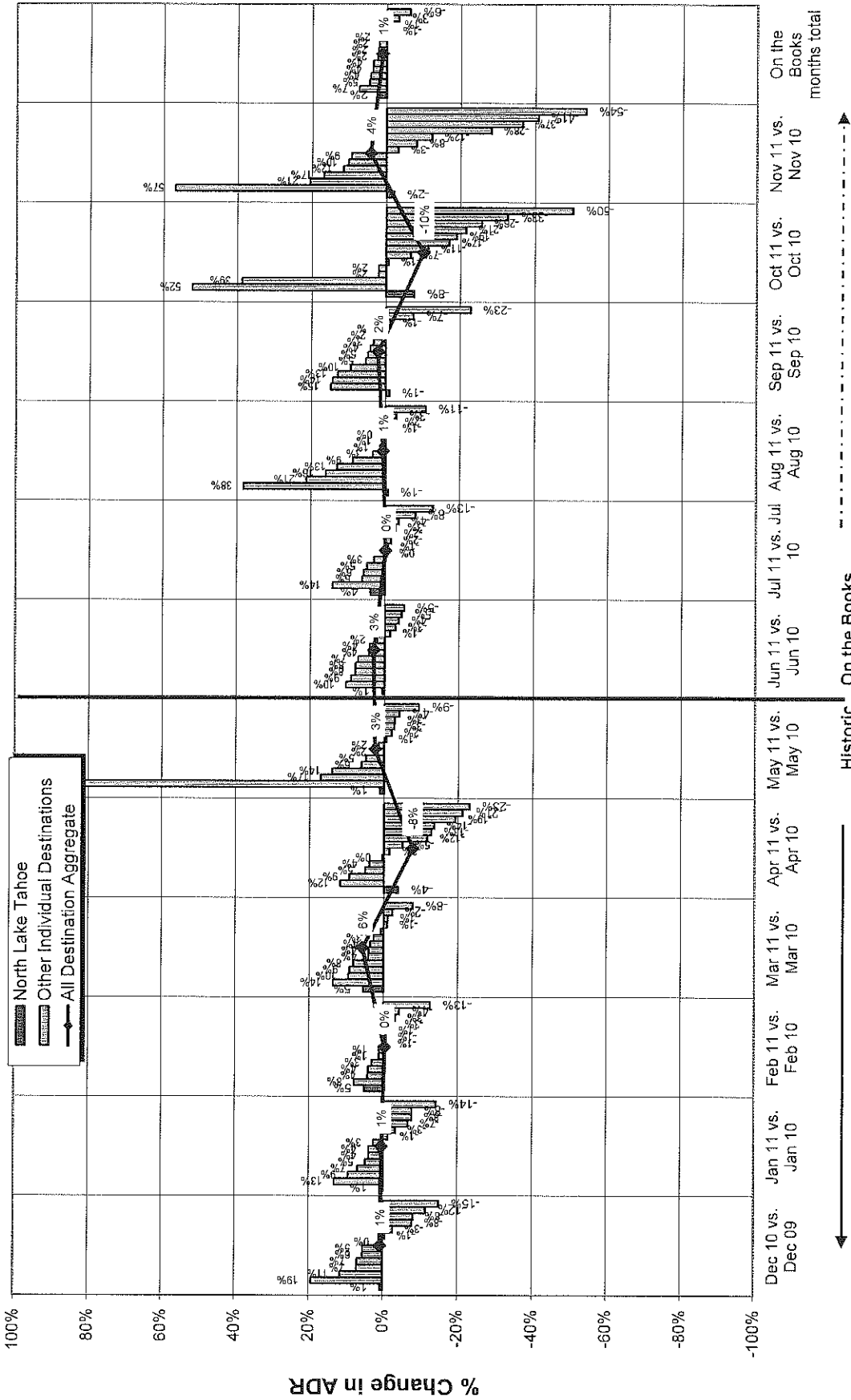
N-11

Average Daily Rate 2010/2011 Season as of May 31, 2011
 Historic and Forecast Data

North Lake Tahoe vs All Individual Mtn Destinations & All Destination Aggregate



Percent Change in Average Daily Rate: 2010/2011 vs 2009/2010 as of May 31, 2011
 North Lake Tahoe vs all Individual Mtn Destinations & All Destination Average

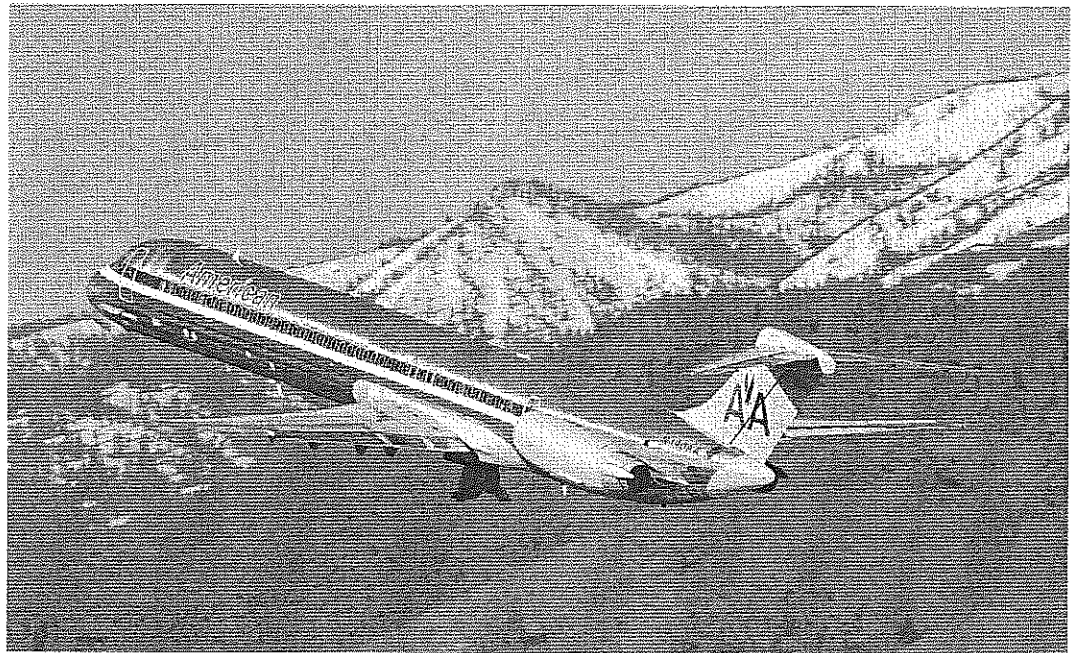


N-13



Reno-Tahoe International Airport

April 2011 Passenger and Cargo Traffic Statistics Reno-Tahoe International Airport



And
up we
go.

May 31, 2011

N-16

U.S. DOMESTIC INDUSTRY OVERVIEW FOR APRIL 2011
All RNO Carriers Systemwide – year over year comparison

Average Load Factor:	82.1% Down (0.1) pts.
Number of Flights: *	1.3% up
Capacity of Seats: *	2.2% up
Crude Oil: **	\$109.5 per barrel April 2011 (Avg.) vs. \$84.3 per barrel April 2010 (Avg.)

RNO OVERVIEW FOR APRIL 2011 – year over year comparison

Total Passengers:	Down (4.5%)
Average Load Factor:	71.7% down (3.4) pts.
Actual Flights:	Up 6.3%
Actual Seats:	Down (0.3%)
Total Cargo:	Up 2.7%

*Source: RNO Monthly Flight Activity Reports; *APGDat; ** U.S. Energy Information Administration*

HIGHLIGHTS

April 2011
vs.
April 2010

Total Passengers
(4.5%)

Enplaned Passengers
(4.9%)

Deplaned Passengers
(4.2%)

Average Load Factor
71.7%
(3.4) points

Total Cargo
2.7%

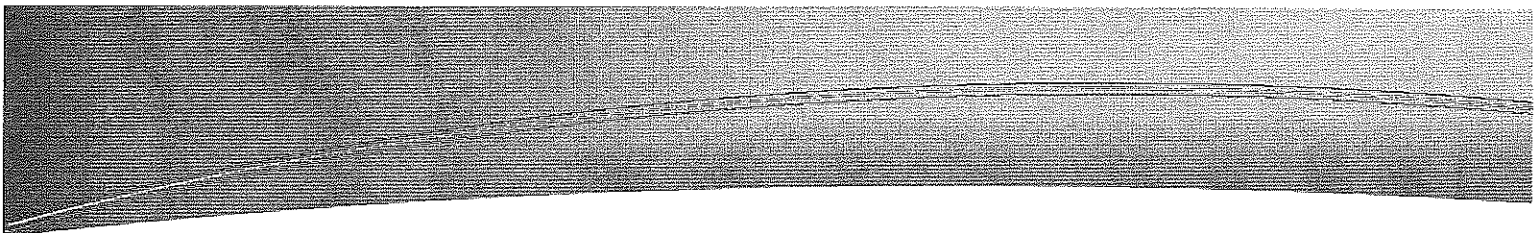
APRIL 2011 SUMMARY

Reno-Tahoe International Airport served 295,537 passengers in April 2011, a decrease of (4.5%) versus the same period last year. Primary reasons for the year-over-year passenger decline are higher fuel costs, which are typically passed on to travelers, coupled with softening demand. US airlines have increased airfares seven times this year. Airlines Reporting Corporation (ARC), which captures transaction data from airlines, travel agencies and other travel suppliers, reported ticket sales volumes climbed just 1.7% in April as compared to 10-12% increases reported in January – March of this year. The number of transactions declined 6.3%. According to consumertravel.com, “Airlines face a potential consumer backlash this summer from angry travelers who are increasingly tired of both fare increases and hidden ancillary fees.” Historically, air travel at RNO in the second quarter is relatively low while first and third quarter air travel is high due to outdoor recreation.

In terms of total cargo, Reno-Tahoe International Airport handled 8,870,669 pounds in April 2011, an increase of 2.7% versus last year. Year over year cargo volumes at RNO have been up for the past fifteen months. RNO handled 37 million pounds of cargo during the first four months of 2011, an increase of 9.4% versus the same period last year.

RNO is served by seven major airlines providing 68 nonstop departures each day to 16 destinations. In April 2011, RNO reported a 6.3% increase in the number of flights

N-17

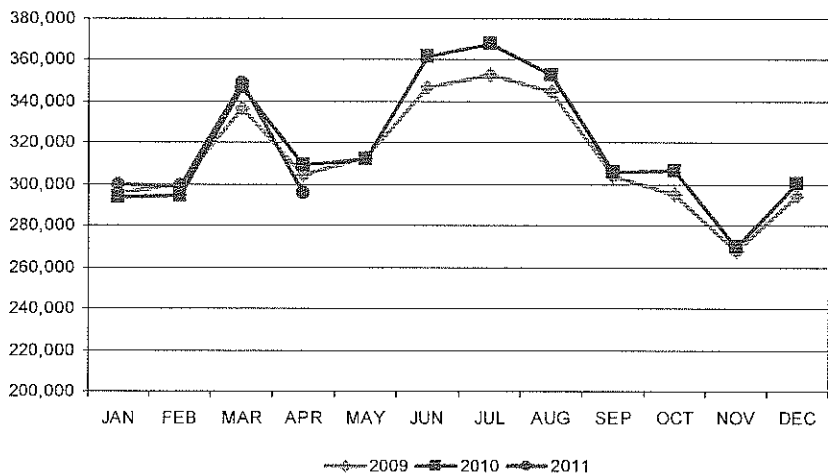


versus last year. This increase was due to the additional flights by American Airlines and United Airlines to Los Angeles, US Airways to Phoenix and Continental Airlines to Houston. Alaska Airlines eliminated Los Angeles service from Reno on April 20, 2011.

The actual seat capacity was down (0.3%) in April 2011 versus the same period last year. American Airlines, Delta Air Lines, United Airlines and US Airways downgauged aircraft on certain routes, offsetting flight increases in other markets. Rising fuel costs have triggered a capacity revision in all US carriers.

Average load factor for scheduled airlines was 71.7%, a decrease of (3.4) load factor points versus the same period last year.

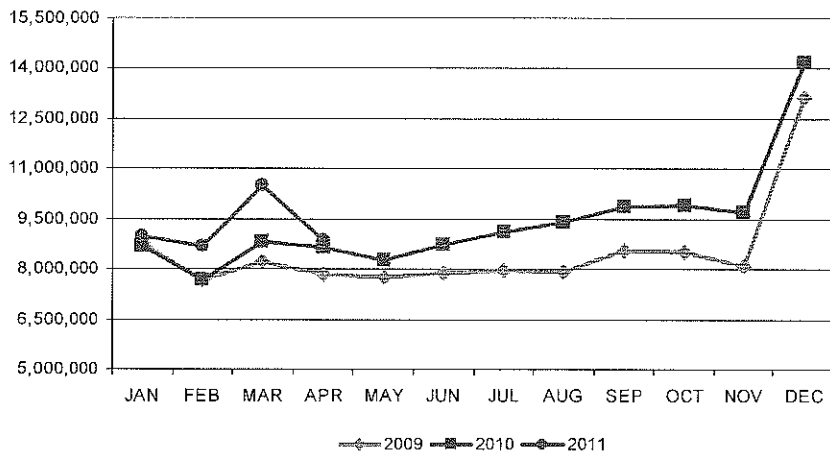
Total Passengers



TOTAL PASSENGERS

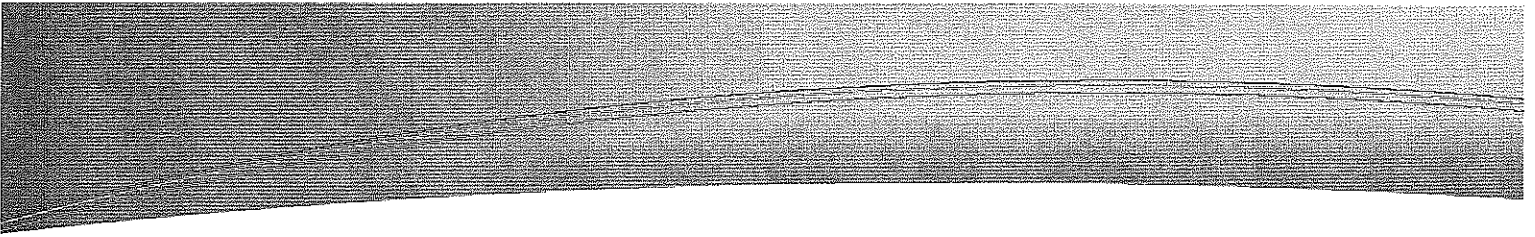
In April 2011, the passenger traffic decreased (4.5%) versus last year. Year over year passenger count for American Airlines increased 6.1%, United/Continental grew 0.7% and US Airways improved 0.6%. Alaska/Horizon passengers declined (36.7%), Delta Air Lines decreased (5.5%), and Southwest Airlines reported (3.2%) less passengers in April 2011 versus the same period last year.

Total Cargo

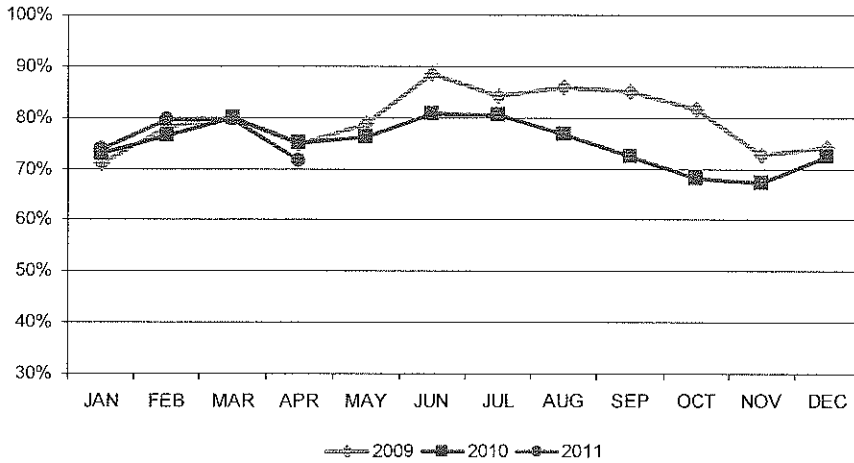


TOTAL CARGO

In April 2011, Reno-Tahoe International Airport handled 8,870,669 pounds of cargo, an increase of 2.7% versus April 2010. Total cargo volumes for Ameriflight were up 25.2% and FedEx grew 6.4% versus last year. UPS handled 2,520,672 pounds of cargo in April 2011, a decrease of (6.1%) versus the same period last year.

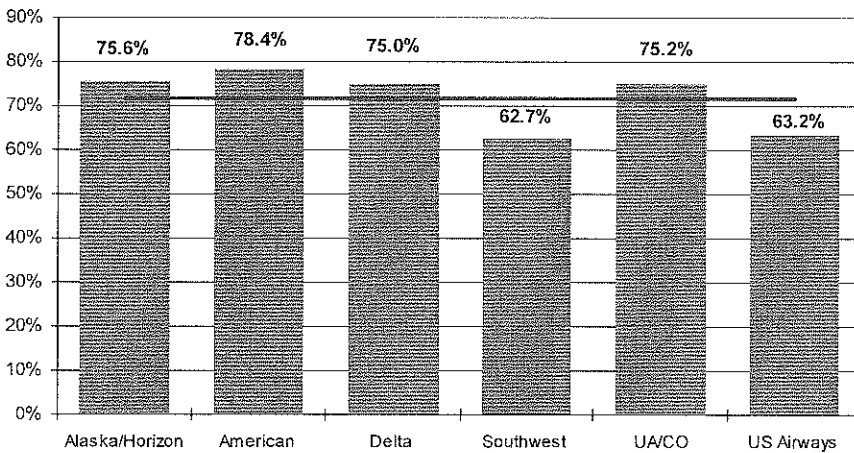


Average Enplaned Load Factors



Systemwide Load Factors			
Apr-11			
	RNO	System	Difference
Alaska	75.6%	84.9%	(9.3)
American	78.4%	80.4%	(2.1)
Delta	75.0%	80.8%	(5.8)
Southwest	62.7%	79.7%	(17.0)
UA/CO	75.2%	76.0%	(0.8)
US Airways	63.2%	82.6%	(19.4)

Enplaned Load Factors by Airlines

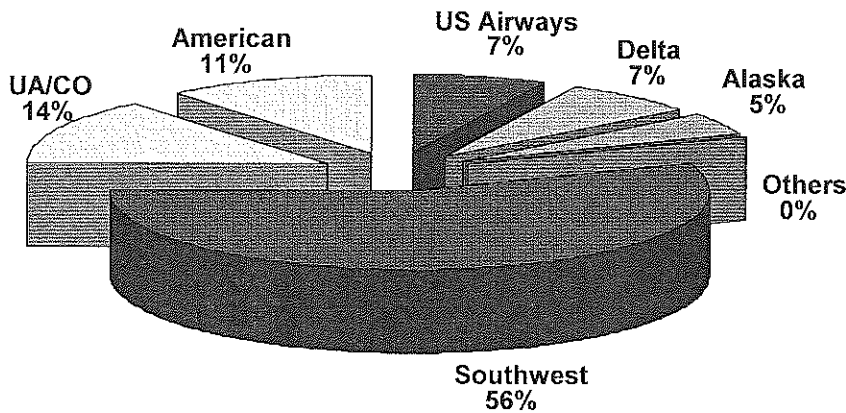


AIRLINE LOAD FACTORS

In April 2011, the average enplaned load factor at RNO was 71.7%, a decrease of (3.4) load factor points versus last year. Besides United/Continental, all airlines at RNO experienced a decline in year over year load factor. In April 2011, United/Continental Load Factor was 75.2%, an increase of 4.2 load factor points versus April 2010.

N-19

Air Carrier Market Share



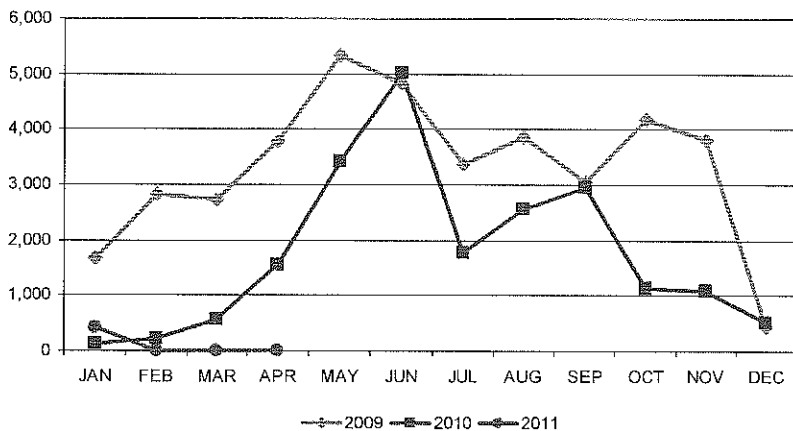
Air Carrier Market Share			
	Apr-11	Apr-10	YOY Change
Alaska	4.7%	7.1%	(2.4)
American	11.1%	10.0%	1.1
Delta	7.2%	7.2%	(0.1)
Southwest	56.0%	55.2%	0.7
UA/CO	13.9%	13.2%	0.7
US Airways	7.2%	6.8%	0.4
Others	0.0%	0.5%	(0.5)

AIRLINE MARKET SHARE

In April 2011, Southwest Airlines carried 165,442 passengers with a passenger market share of 56.0%. The next highest market share was United/Continental at 13.9% followed by American Airlines with 11.1%. US Airways and Delta Air Lines carried 7.2% and Alaska Airlines carried 4.7% of the total passengers at Reno-Tahoe International Airport.

American Airlines' year over year passenger market share at RNO increased 1.1 percentage points due to the addition of LAX service in June 2010. With the addition of a non-stop flight to Houston, United/Continental's year over year passenger market share grew 0.7 percentage points. Alaska Airlines eliminated LAX service, decreasing its year over year passenger market share by (2.4) points to 4.7%.

Total Domestic Charter Passengers



DOMESTIC CHARTER PASSENGERS

There was no charter activity in April 2011 at Reno-Tahoe International Airport. RNO served 1,439 charter passengers in April 2010.