



November 2015

Marketing Standing
Reports

Monthly Report October 2015

CONFERENCE REVENUE STATISTICS

North Shore Properties

Year to Date Bookings/Monthly Production Detail FY 15/16

Prepared By: Anna Atwood, Marketing Executive Assistant

	<u>FY 15/16</u>	<u>FY 14/15</u>	<u>Variance</u>
Total Revenue Booked as of 10/31/15:	\$2,688,222	\$2,015,701	33%
Forecasted Commission for this Revenue:	\$146,514	\$120,542	22%
Number of Room Nights:	14945	11006	36%
Number of Delegates:	17232	6708	157%
Annual Revenue Goal:	\$2,800,000	\$2,500,000	12%
Annual Commission Goal:	\$165,000	\$140,000	18%
Number of Tentative Bookings:	91	102	-11%

<u>Monthly Detail/Activity</u>	<u>October-15</u>	<u>October-14</u>	
<u>Number of Groups Booked:</u>	5	4	
Revenue Booked:	\$216,914	\$44,208	391%
Projected Commission:	\$16,653	\$895	1761%
Room Nights:	503	260	93%
Number of Delegates:	245	180	36%
Booked Group Types:	3 Corp., 2 Assn.	1 Corp, 3 Smf	
Lost Business, # of Groups:	2	6	

<u>Arrived in the month</u>	<u>October-15</u>	* Est.	<u>October-14</u>	
Number of Groups:	4		4	
Revenue Arrived:	\$301,150		\$74,408	305%
Projected Commission:	\$29,941		\$1,160	2481%
Room Nights:	1947		510	282%
Number of Delegates:	10712		568	1786%
Arrived Group Types:	3 Corp, 1 Smf		2 Corp, 1 Assn. 1 Smf	

<u>Monthly Detail/Activity</u>	<u>September-15</u>	<u>September-14</u>	
<u>Number of Groups Booked:</u>	2	8	
Revenue Booked:	\$18,378	\$367,511	-95%
Projected Commission:	\$693	\$28,336	-98%
Room Nights:	150	3417	-96%
Number of Delegates:	70	2115	-97%
Booked Group Types:	1 Smf, 1 Ca Assoc.	2 Corp, 6 Assoc.	
Lost Business, # of Groups:	8	5	

<u>Arrived in the month</u>	<u>September-15</u> * Est.	<u>September-14</u>	
Number of Groups:	9	9	
Revenue Arrived:	\$705,771	\$537,101	31%
Projected Commission:	\$54,203	\$7,879	588%
Room Nights:	4082	2782	47%
Number of Delegates:	1976	1675	18%
Arrived Group Types:	2 Corp, 2 Assoc, 3 Ca Assn., 2 Smf	4 Assoc., 1 Corp, 3 Smf and 1 Society	
Arrived Group Types:	2 Corp, 2 Assoc, 3 Ca Assn., 2 Smf	4 Assoc., 1 Corp, 3 Smf and 1 Society	

<u>Monthly Detail/Activity</u>	<u>August-15</u>	<u>August-14</u>	
<u>Number of Groups Booked:</u>	3	7	
Revenue Booked:	\$40,570	\$328,584	-88%
Projected Commission:	\$3,884	\$14,879	-74%
Room Nights:	264	1452	-82%
Number of Delegates:	224	723	-69%
Booked Group Types:	2 Corp. 1 Smf	4 Smf, 2 Corp., 1 Assn., 1 Govt	
Lost Business, # of Groups:	7	4	

<u>Arrived in the month</u>	<u>August-15</u> * Est.	<u>August-14</u>	
Number of Groups:	7	8	
Revenue Arrived:	\$257,500	\$44,210	482%
Projected Commission:	\$18,796	\$1,739	981%
Room Nights:	1843	252	631%
Number of Delegates:	632	278	127%
Arrived Group Types:	3 Corp., 2 Assn., 2 Govt.	2 Corp, 1 Assoc., 4 Smf, 1 Govt.	

<u>Monthly Detail/Activity</u>	<u>July-15</u>	<u>July-14</u>	
<u>Number of Groups Booked:</u>	4	4	
Revenue Booked:	\$119,459	\$156,104	-23%
Projected Commission:	\$3,023	\$1,075	181%
Room Nights:	850	636	34%
Number of Delegates:	10390	390	2564%
Booked Group Types:	1 Ca Assoc, 1 Corp, 1 Smf, 1 Assoc.	2 Assoc, 2 Corp	
Lost Business, # of Groups:	4	1	

<u>Arrived in the month</u>	<u>July-15</u>	* Est.	<u>July-14</u>	
Number of Groups:	7		12	
Revenue Arrived:	\$322,369		\$546,907	-41%
Projected Commission:	\$11,284		\$23,673	-52%
Room Nights:	1754		2103	-17%
Number of Delegates:	1725		898	92%
	3 Corp., 1 Ca		6 Smf, 2 Corp,	
	Assoc.,1 Smf, 1		2 Assoc. 2	
Arrived Group Types:	Seminar		Seminars	

For 2016/17:	\$1,324,399	\$2,000,000
For 2017/18:	\$246,983	\$750,000

NUMBER OF LEADS Generated as o 10/31/15: 50

Total Number of Leads Generated in Previous Years:

2014/2015	175
2013/2014	172
2012/2013:	171
2011/2012:	119
2010/2011:	92
2009/2010:	107
2008/2009:	151
2007/2008:	209
2006/2007:	205

Monthly Report October 2015

CONFERENCE REVENUE STATISTICS

South Lake Tahoe

Year to Date Bookings/Monthly Production Detail FY 15/16

Prepared By: Anna Atwood, Marketing Executive Assistant

	<u>15/16</u>	<u>14/15</u>	<u>Variance</u>
Total Revenue Booked as of 10/31/15:	\$87,398	\$822,567	-89%
Forecasted Commission for this Revenue:	\$5,952	\$31,004	-81%
Number of Room Nights:	709	6723	-89%
Number of Delegates:	465	3230	-86%
Annual Commission Projection:	\$10,000	\$30,000	-67%

<u>Monthly Detail/Activity</u>	<u>October-15</u>	<u>October-14</u>
<u>Number of Groups Booked:</u>	1	0
Revenue Booked:	\$3,592	\$0
Projected Commission:	\$537	\$0
Room Nights:	20	0
Number of Delegates:	20	0
Booked Group Types:	1 Corp.	

<u>Arrived in the month</u>	<u>October-15</u>	<u>October-14</u>
Number of Groups:	3	0
Revenue Arrived:	\$44,564	\$0
Projected Commission:	\$2,099	\$0
Room Nights:	187	0
Number of Delegates:	134	0
Arrived Group Types:	1 Corp, 1 Assn., 1 Smf	

<u>Monthly Detail/Activity</u>	<u>September-15</u>	<u>September-14</u>	
<u>Number of Groups Booked:</u>	3	1	
Revenue Booked:	\$11,830	\$38,493	-69%
Projected Commission:	\$0	\$1,925	
Room Nights:	101	230	-56%
Number of Delegates:	96	200	-52%
Booked Group Types:	1 Ca Assn., 2 Smf	1 Smf.	

<u>Arrived in the month</u>	<u>September-15</u>	<u>September-14</u>	
Number of Groups:	2	4	
Revenue Arrived:	\$31,347	\$521,681	-94%
Projected Commission:	\$1,567	\$27,677	-94%
Room Nights:	270	3664	-93%
Number of Delegates:	120	1645	-93%
Arrived Group Types:	1 Corp., 1 Smf	2 Corp., 1 Assn., 1 Smf	

Monthly Detail/Activity	<u>August-15</u>	<u>August-14</u>	
<u>Number of Groups Booked:</u>	1	2	
Revenue Booked:	\$139,320	\$9,603	1351%
Projected Commission:	\$6,966	\$481	
Room Nights:	1220	80	1425%
Number of Delegates:	300	30	900%
Booked Group Types:	1 Assn.	2 Smf	

<u>Arrived in the month</u>	<u>August-15</u>	<u>August-14</u>	
Number of Groups:	0	1	
Revenue Arrived:	\$0	\$32,748	-100%
Projected Commission:	\$0	\$4,912	-100%
Room Nights:	0	93	-100%
Number of Delegates:	0	30	-100%
Arrived Group Types:	0	1 Smf.	

Monthly Detail/Activity	<u>July-15</u>	<u>July-14</u>	
<u>Number of Groups Booked:</u>	2	1	
Revenue Booked:	\$7,662	\$10,800	-29%
Projected Commission:	\$1,149	\$0	
Room Nights:	66	55	20%
Number of Delegates:	68	40	70%
Booked Group Types:	2 Smf	1 Smf.	

<u>Arrived in the month</u>	<u>July-15</u>	<u>July-14</u>	
Number of Groups:	3	1	
Revenue Arrived:	\$30,232	\$32,748	-8%
Projected Commission:	\$1,749	\$4,912	-64%
Room Nights:	211	93	127%
Number of Delegates:	156	30	420%
Arrived Group Types:	1 Assoc., 2 Smf	1 Smf.	

NUMBER OF LEADS Generated as of 10/31/15: 50

Total Number of Leads Generated in Previous Years:

2014/2015 175
2013/2014 172
2012/2013: 171
2011/2012: 119
2010/2011: 92
2009/2010: 107
2008/2009: 151
2007/2008: 209
2006/2007: 205

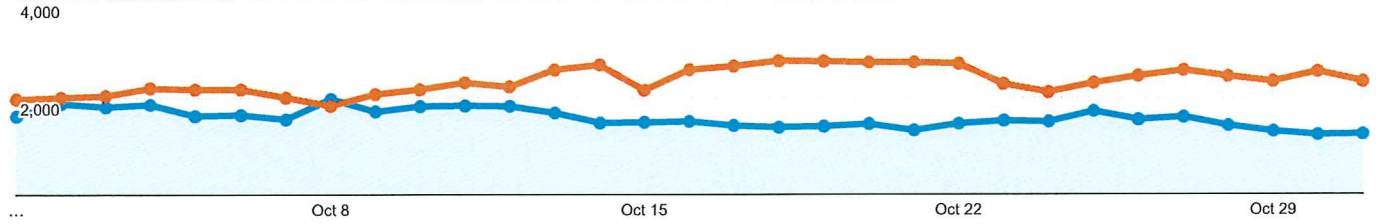
Audience Overview

Oct 1, 2015 - Oct 31, 2015
Compare to: Oct 1, 2014 - Oct 31, 2014

All Sessions
+0.00%

Overview

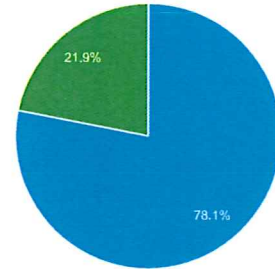
Oct 1, 2015 - Oct 31, 2015: ● Sessions
Oct 1, 2014 - Oct 31, 2014: ● Sessions



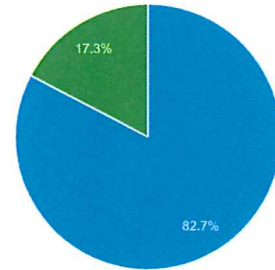
Sessions -32.84% 48,395 vs 72,058	Users -36.38% 39,753 vs 62,485	Pageviews 4.73% 174,352 vs 166,472
Pages / Session 55.94% 3.60 vs 2.31	Avg. Session Duration 42.28% 00:02:10 vs 00:01:32	Bounce Rate -55.55% 29.62% vs 66.63%
% New Sessions -5.55% 78.01% vs 82.59%		

■ New Visitor ■ Returning Visitor

Oct 1, 2015 - Oct 31, 2015



Oct 1, 2014 - Oct 31, 2014



Language	Sessions	% Sessions
1. en-us		
Oct 1, 2015 - Oct 31, 2015	45,024	93.03%
Oct 1, 2014 - Oct 31, 2014	65,252	90.55%
% Change	-31.00%	2.74%
2. en-gb		
Oct 1, 2015 - Oct 31, 2015	423	0.87%
Oct 1, 2014 - Oct 31, 2014	1,037	1.44%
% Change	-59.21%	-39.26%
3. es		
Oct 1, 2015 - Oct 31, 2015	227	0.47%
Oct 1, 2014 - Oct 31, 2014	247	0.34%
% Change	-8.10%	36.84%

4. **es-es**

Oct 1, 2015 - Oct 31, 2015	218	0.45%
Oct 1, 2014 - Oct 31, 2014	375	0.52%
% Change	-41.87%	-13.44%

5. **es-419**

Oct 1, 2015 - Oct 31, 2015	213	0.44%
Oct 1, 2014 - Oct 31, 2014	86	0.12%
% Change	147.67%	268.78%

6. **es-us**

Oct 1, 2015 - Oct 31, 2015	213	0.44%
Oct 1, 2014 - Oct 31, 2014	16	0.02%
% Change	1,231.25%	1,882.17%

7. **pt-br**

Oct 1, 2015 - Oct 31, 2015	204	0.42%
Oct 1, 2014 - Oct 31, 2014	961	1.33%
% Change	-78.77%	-68.39%

8. **ru**

Oct 1, 2015 - Oct 31, 2015	148	0.31%
Oct 1, 2014 - Oct 31, 2014	37	0.05%
% Change	300.00%	495.58%

9. **zh-cn**

Oct 1, 2015 - Oct 31, 2015	129	0.27%
Oct 1, 2014 - Oct 31, 2014	209	0.29%
% Change	-38.28%	-8.10%

10. **en**

Oct 1, 2015 - Oct 31, 2015	123	0.25%
Oct 1, 2014 - Oct 31, 2014	241	0.33%
% Change	-48.96%	-24.01%

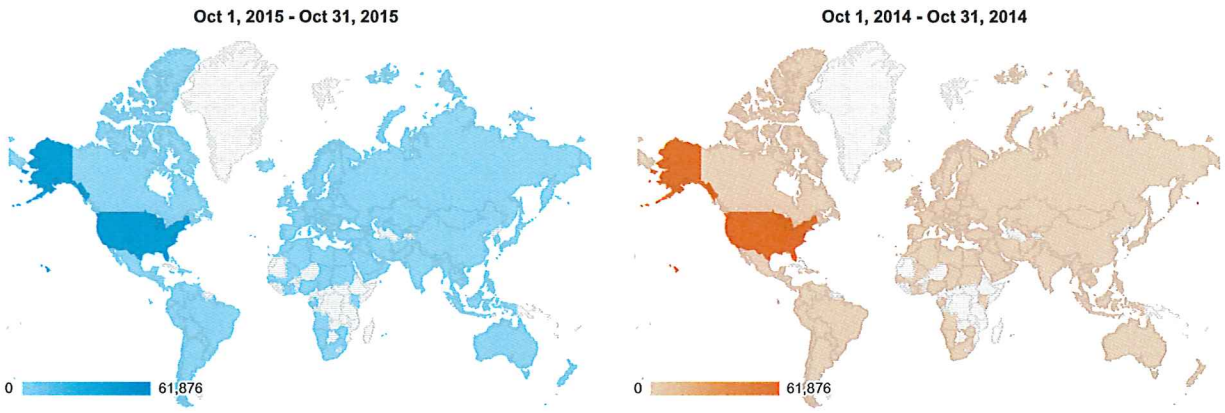
Location

Oct 1, 2015 - Oct 31, 2015
Compare to: Oct 1, 2014 - Oct 31, 2014

All Sessions +0.00%

Map Overlay

Summary



Country	City	Acquisition			Behavior			Conversions Goal 1: Lodging Book Now			
		Sessions	% New Sessions	New Users	Bounce Rate	Pages / Session	Avg. Session Duration	Lodging Book Now (Goal 1 Conversion Rate)	Lodging Book Now (Goal 1 Completions)	Lodging Book Now (Goal 1 Value)	
		32.84% ↓ 48,395 vs 72,058	5.50% ↓ 78.14% vs 82.69%	36.53% ↓ 37,817 vs 59,586	55.55% ↑ 29.62% vs 66.63%	55.94% ↑ 3.60 vs 2.31	42.28% ↑ 00:02:10 vs 00:01:32	100.00% ↑ 1.16% vs 0.00%	100.00% ↑ 561 vs 0	0.00% \$0.00 vs \$0.00	
1. United States	San Francisco										
		Oct 1, 2015 - Oct 31, 2	4,978 (10.29%)	76.66%	3,816 (10.09%)	32.38%	3.34	00:01:59	0.98%	49 (8.73%)	\$0.00 (0.00%)
		Oct 1, 2014 - Oct 31, 2	6,007 (8.34%)	71.98%	4,324 (7.26%)	59.26%	2.36	00:01:41	0.00%	0 (0.00%)	\$0.00 (0.00%)
		% Change	-17.13%	6.49%	-11.75%	-45.36%	41.58%	17.77%	∞%	∞%	0.00%
2. United States	Los Angeles										
		Oct 1, 2015 - Oct 31, 2	3,677 (7.60%)	80.91%	2,975 (7.87%)	30.65%	2.49	00:01:09	0.76%	28 (4.99%)	\$0.00 (0.00%)
		Oct 1, 2014 - Oct 31, 2	1,304 (1.81%)	82.06%	1,070 (1.80%)	56.67%	2.68	00:01:44	0.00%	0 (0.00%)	\$0.00 (0.00%)
		% Change	181.98%	-1.40%	178.04%	-45.92%	-7.01%	-33.75%	∞%	∞%	0.00%
3. United States	Incline Village										
		Oct 1, 2015 - Oct 31, 2	1,612 (3.33%)	51.99%	838 (2.22%)	30.09%	3.83	00:02:46	0.19%	3 (0.53%)	\$0.00 (0.00%)
		Oct 1, 2014 - Oct 31, 2	1,910 (2.65%)	54.82%	1,047 (1.76%)	54.50%	2.69	00:02:19	0.00%	0 (0.00%)	\$0.00 (0.00%)
		% Change	-15.60%	-5.17%	-19.96%	-44.80%	42.09%	19.88%	∞%	∞%	0.00%
4. United States	Reno										
		Oct 1, 2015 - Oct 31, 2	1,484 (3.07%)	69.81%	1,036 (2.74%)	24.06%	4.32	00:02:47	0.47%	7 (1.25%)	\$0.00 (0.00%)
		Oct 1, 2014 - Oct 31, 2	1,919 (2.66%)	71.44%	1,371 (2.30%)	55.81%	2.66	00:02:07	0.00%	0 (0.00%)	\$0.00 (0.00%)
		% Change	-22.67%	-2.28%	-24.43%	-56.90%	62.81%	32.29%	∞%	∞%	0.00%
5. United States	Sacramento										

Oct 1, 2015 - Oct 31, 2	1,478 (3.05%)	77.06%	1,139 (3.01%)	28.96%	3.90	00:02:20	1.29%	19 (3.39%)	\$0.00 (0.00%)
Oct 1, 2014 - Oct 31, 2	1,253 (1.74%)	75.58%	947 (1.59%)	51.56%	2.88	00:02:18	0.00%	0 (0.00%)	\$0.00 (0.00%)
% Change	17.96%	1.96%	20.27%	-43.83%	35.37%	1.33%	∞%	∞%	0.00%
6. United States	San Diego								
Oct 1, 2015 - Oct 31, 2	1,362 (2.81%)	80.62%	1,098 (2.90%)	30.18%	2.56	00:00:59	0.95%	13 (2.32%)	\$0.00 (0.00%)
Oct 1, 2014 - Oct 31, 2	531 (0.74%)	84.37%	448 (0.75%)	55.74%	2.56	00:01:33	0.00%	0 (0.00%)	\$0.00 (0.00%)
% Change	156.50%	-4.45%	145.09%	-45.87%	-0.15%	-35.81%	∞%	∞%	0.00%
7. United States	Truckee								
Oct 1, 2015 - Oct 31, 2	865 (1.79%)	62.89%	544 (1.44%)	26.24%	4.30	00:03:03	0.12%	1 (0.18%)	\$0.00 (0.00%)
Oct 1, 2014 - Oct 31, 2	1,449 (2.01%)	55.00%	797 (1.34%)	55.07%	2.65	00:02:45	0.00%	0 (0.00%)	\$0.00 (0.00%)
% Change	-40.30%	14.34%	-31.74%	-52.35%	62.16%	11.04%	∞%	∞%	0.00%
8. United States	South Lake Tahoe								
Oct 1, 2015 - Oct 31, 2	703 (1.45%)	63.73%	448 (1.18%)	30.30%	4.04	00:03:31	0.28%	2 (0.36%)	\$0.00 (0.00%)
Oct 1, 2014 - Oct 31, 2	949 (1.32%)	65.75%	624 (1.05%)	62.07%	2.36	00:01:50	0.00%	0 (0.00%)	\$0.00 (0.00%)
% Change	-25.92%	-3.08%	-28.21%	-51.18%	71.26%	92.32%	∞%	∞%	0.00%
9. United States	Houston								
Oct 1, 2015 - Oct 31, 2	653 (1.35%)	73.35%	479 (1.27%)	20.52%	3.12	00:02:11	0.92%	6 (1.07%)	\$0.00 (0.00%)
Oct 1, 2014 - Oct 31, 2	672 (0.93%)	88.24%	593 (1.00%)	63.84%	2.64	00:01:30	0.00%	0 (0.00%)	\$0.00 (0.00%)
% Change	-2.83%	-16.87%	-19.22%	-67.86%	17.85%	46.20%	∞%	∞%	0.00%
10. United States	New York								
Oct 1, 2015 - Oct 31, 2	581 (1.20%)	88.64%	515 (1.36%)	48.36%	2.95	00:01:50	0.34%	2 (0.36%)	\$0.00 (0.00%)
Oct 1, 2014 - Oct 31, 2	1,094 (1.52%)	90.22%	987 (1.66%)	79.98%	1.75	00:00:58	0.00%	0 (0.00%)	\$0.00 (0.00%)
% Change	-46.89%	-1.75%	-47.82%	-39.53%	68.73%	88.27%	∞%	∞%	0.00%

Rows 1 - 10 of 8196

BOOK NOW CLICK THROUGH / PER PROPERTY

Event Label	Total Events	Unique Events
Hyatt Regency Lake Tahoe Resort Spa & Casino	76	73
The Village at Squaw Valley	56	53
Cedar Glen Lodge	38	37
The Ritz-Carlton, Lake Tahoe	37	36
Cedar Crest Cottages	33	32
Cottage Inn at Lake Tahoe	26	22
Northstar California Resort	26	23
Sunnyside Restaurant & Lodge	23	21
Mourelatos Lakeshore Resort	22	21
Tahoe Mountain Resorts Lodging	22	19
Resort at Squaw Creek	20	19
West Shore Cafe & Inn	19	17
Brockway Springs Resort	17	16
Meeks Bay Resort & Marina	17	16
Tahoe Biltmore Lodge & Casino	14	14
Constellation Residences at Northstar	13	13
PlumpJack Squaw Valley Inn	13	12
Tahoe Exclusive Vacation Rentals	12	9
The Lodge at Obexers	12	11
North Tahoe Rental Company	11	10
Squaw Valley Lodge	11	11
Tahoma Meadows Bed & Breakfast Cottages	11	11
Shore House at Lake Tahoe	10	8
Vacation Station, Inc.	10	8
William Kent Campground	10	9
Lake Tahoe Accommodations	9	8
Red Wolf Lakeside Lodge	9	9
Shooting Star Bed & Breakfast	9	9
Squaw Valley Alpine Meadows	9	9
The Lodge at Sugar Bowl	9	7
Hauserman Rental Group	8	8
Tahoe Moon Properties	8	8
Tahoe Signature Properties	8	8
Americas Best Value Inn Tahoe City	7	7
Chaney House	7	5
Granlibakken Tahoe	7	7
Holiday House	7	7
Sierra Vacation Rentals/Sales	7	6

Tahoe Woodside Vacation Rentals	7	7
Aviva Inn	6	6
Ferrari's Crown Resort	6	6
Incline Vacation Rentals	6	6
Parkside Inn at Incline	6	6
Red Wolf Lodge at Squaw Valley	6	6
Tahoe Luxury Properties	6	6
Tahoe Rentals by Wells and Bennett Realtors	6	6
Chalet de Huttlinger	5	5
Granlibakken Conf. Center & Resort	5	5
Ice Lakes Lodge at Royal Gorge XC Ski Resort	5	5
Kingswood Village Vacation Rentals	5	5
Prosser Family Campground	5	4
Squaw Valley Adventure Center	5	5
Stay In Lake Tahoe	5	5
Tahoe Vistana Inn	5	4
Tamarack Lodge	5	5
The Border House	5	5
VACA North Tahoe	5	5
Firelite Lodge	4	4
Tahoe City Inn	4	4
Tahoe Marina Lodge	4	4
Vacasa	4	4
Waters of Tahoe Properties	4	4
First Accommodations, Inc.	3	3
Tahoe Sands Resort	3	3
Agate Bay Realty Vacation Rentals	2	2
Tahoe Inn	2	2
Tahoe Real Estate Group	2	2
Vacation Tahoe by O'Neal Brokers	2	2
A Chapel at Lake Tahoe	1	1
Alpine Rental Group	1	1
Full Moon Snowshoe Tours with Tahoe Adventure Company	1	1
Goldfish Properties	1	1
Incline at Tahoe Realty	1	1
SellMyTimeShareNow.com	1	1
Sierra Mountain Properties	1	1
TOTAL	811	765



Passenger and Cargo Statistics Report

Reno-Tahoe International Airport
September 2015



U.S. DOMESTIC INDUSTRY OVERVIEW FOR SEPTEMBER 2015

All RNO Carriers Domestic Systemwide – year over year comparison

Average Load Factor:	84.2% up 1.1% pts.
Number of Flights *:	Down (1.3%)
Capacity of Seats *:	Up 3.2%
Crude Oil Average:	\$45.48 per barrel in Sep. 2015 vs. \$93.21 per barrel in Sep. 2014

RNO OVERVIEW FOR SEPTEMBER 2015 – year over year comparison

Total Passengers:	Up 4.3%
Year-to-Date Passengers:	Up 1.9%
Avg. Enplaned Load Factor:	84.3%, down (0.5% pts.)
Actual Departures:	Up 0.7%
Actual Departing Seats:	Up 3.8%
Total Cargo:	Up 22.1%
Year-to-Date Cargo:	Up 5.8%

Source: RNO Monthly Flight Activity Reports; * INNOVATA Flight Schedule via Diio

SEPTEMBER 2015 SUMMARY

Reno-Tahoe International Airport (RNO) served 297,299 passengers in September 2015, which is up 4.3% versus September 2014. The airport experienced positive passenger growth for the fourth consecutive month with respect to year over year monthly increases. During the first nine months of 2015, RNO served 2,596,982 passengers, representing an increase of 1.9% when compared to the same period last year.

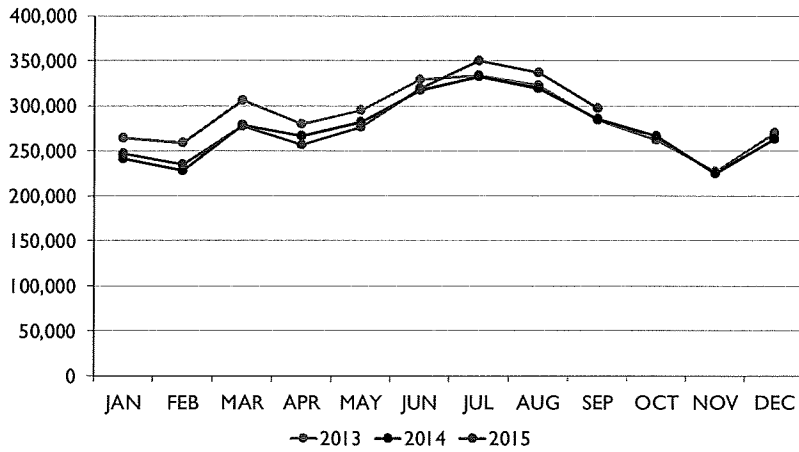
In September 2015, RNO handled 12,360,393 pounds of cargo, an increase of 22.1% when compared to September 2014. This represents the best September ever recorded at RNO in terms of cargo lift. The growing cargo demand in the northern Nevada region is forcing the airlines to add capacity at RNO. In September 2015, UPS added eight weekly flights to their schedule. RNO handled 96,551,682 pounds of air cargo during the first nine months of 2015, an increase of 5.8% when compared to the same period last year.

In September 2015, RNO was served by nine airlines providing 57 peak daily departures to 17 non-stop destinations. Total departures at RNO were up 0.7% and the seat capacity increased 3.8% when compared to September 2014. American Airlines, Delta Air Lines and United Airlines continue to use larger aircraft in select markets to align seat capacity with the growing travel demand.

Starting November 5, 2015, Alaska Airlines will begin non-stop daily flights between RNO and Boise Airport. The airline will fly the route with a 76-seat Bombardier Q400 aircraft. It will depart Reno at 4:35 p.m. and arrive in Boise at 6:55 p.m. It will depart Boise at 6:15 p.m. and arrive in Reno at 6:44 p.m.



TOTAL PASSENGERS

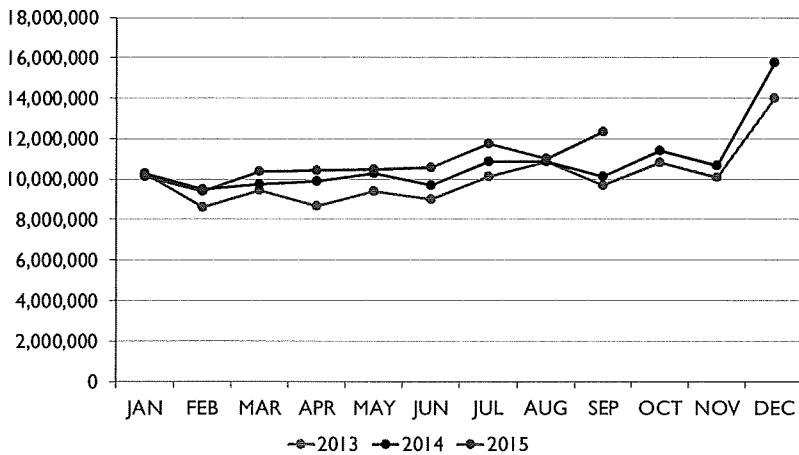


TOTAL PASSENGERS

RNO served 297,299 passengers in September 2015, which is up 4.3% when compared to September 2014. Southwest Airlines, the largest carrier at RNO, carried 129,355 passengers during the month of September 2015, flat when compared to September 2014. American Airlines (including US Airways) reported a passenger increase of 11%, Alaska Airlines grew 7.4% and United Airlines reported an increase of 2.2% during the same period.

In September 2015, Delta Air Lines' passenger traffic decreased (7.5%) while Allegiant Air reported a decrease of (42.7%) when compared to the same period last year.

TOTAL CARGO

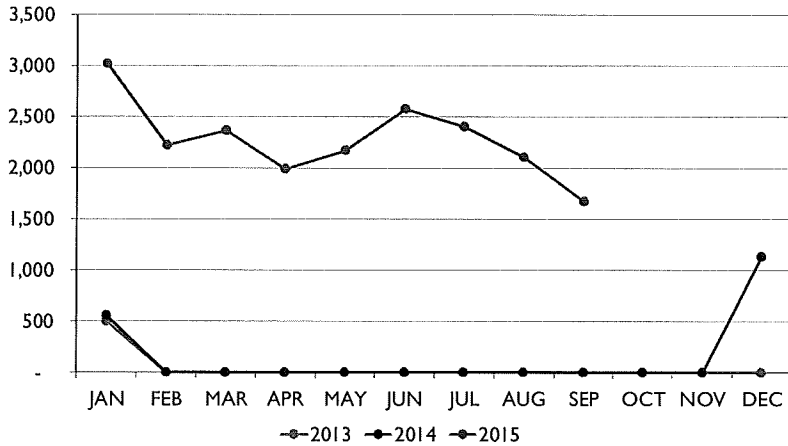


TOTAL CARGO

In September 2015, RNO handled 12,360,393 pounds of air cargo, an increase of 22.1% versus September 2014. The cargo tonnage of UPS increased 52.3%, FedEx grew 10.3% and Ameriflight reported an increase of 9.5% during the same period.



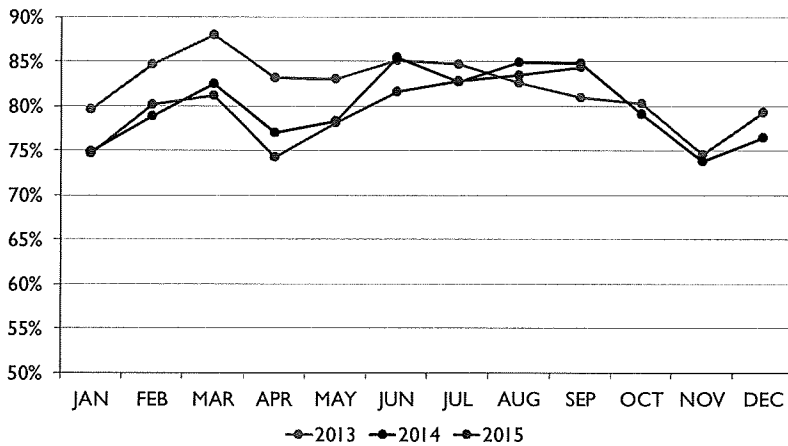
TOTAL INTERNATIONAL PASSENGERS



TOTAL INTERNATIONAL PASSENGERS

In September 2015, RNO served a total of 1,668 international passengers. Volaris Airlines operated twice a week scheduled flights to Guadalajara, Mexico. Starting Monday, November 2, 2015, Volaris will offer this route three times a week. The days of operation are Monday, Tuesday and Friday.

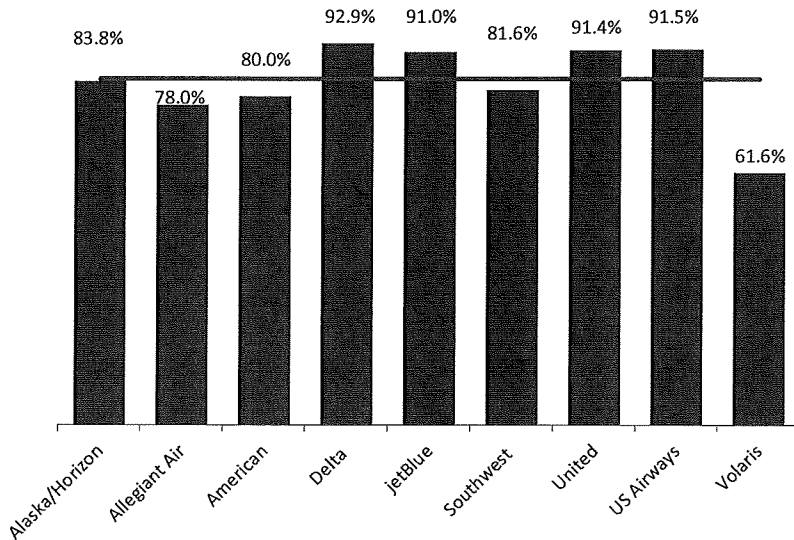
AVERAGE ENPLANED LOAD FACTOR



AVERAGE ENPLANED LOAD FACTOR

In September 2015, the average enplaned load factor at RNO was 84.3%, a decrease of (0.5% pts.) versus September 2014 .

AVERAGE ENPLANED LOAD FACTOR BY AIRLINE



Enplaned Load Factors September 2015

Airline	RNO	Network	Difference
Alaska	83.8%	81.6%	2.2
Allegiant Air	78.0%	82.8%	(4.8)
American	80.0%	82.7%	(2.7)
Delta	92.9%	85.0%	7.9
JetBlue	91.0%	85.1%	5.9
Southwest	81.6%	82.7%	(1.1)
United	91.4%	82.9%	8.5
US Airways	91.5%	82.7%	8.8
Volaris	61.6%	78.0%	(16.4)

Source: Airline Performance Reports

American and US Airways reported combined operations

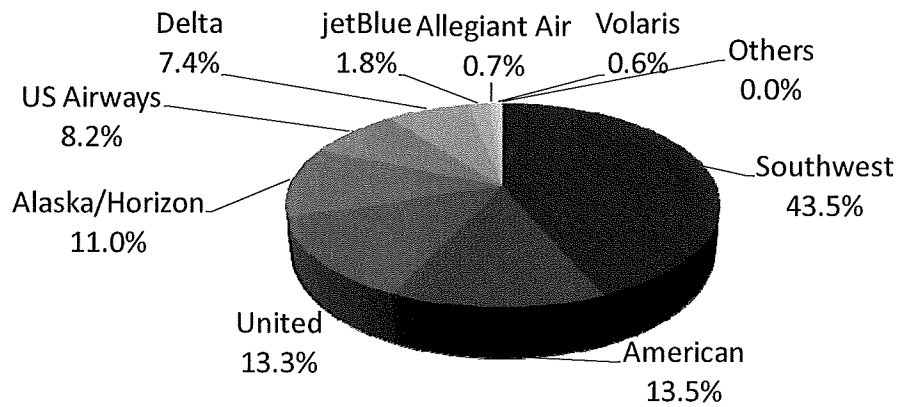


Reno-Tahoe
Airport Authority

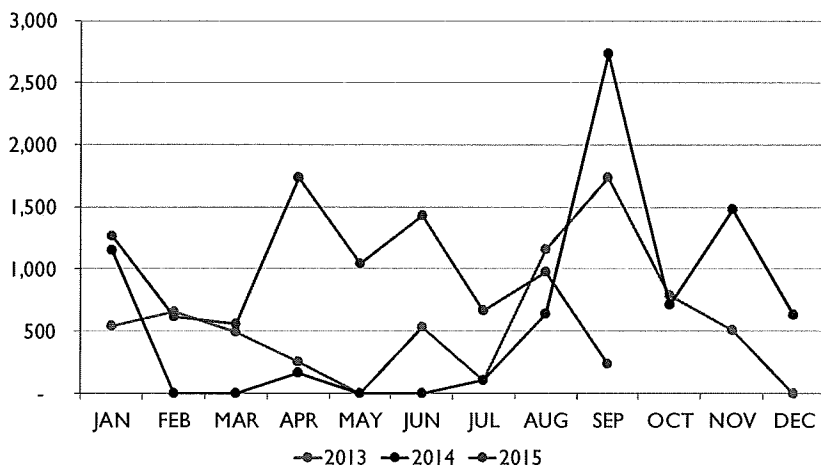
AIR CARRIER MARKET SHARE

	September-15	September-14	YOY Change
Alaska/Horizon	11.0%	10.7%	0.3
Allegiant Air	0.7%	1.2%	(0.6)
American	13.5%	9.5%	4.0
Delta	7.4%	8.3%	(0.9)
jetBlue	1.8%	n/a	n/a
Southwest	43.5%	45.3%	(1.8)
United	13.3%	13.6%	(0.3)
US Airways	8.2%	10.9%	(2.7)
Volaris	0.6%	n/a	n/a
Others	0.0%	0.4%	(0.4)

AIR CARRIER MARKET SHARE



TOTAL CHARTER PASSENGERS

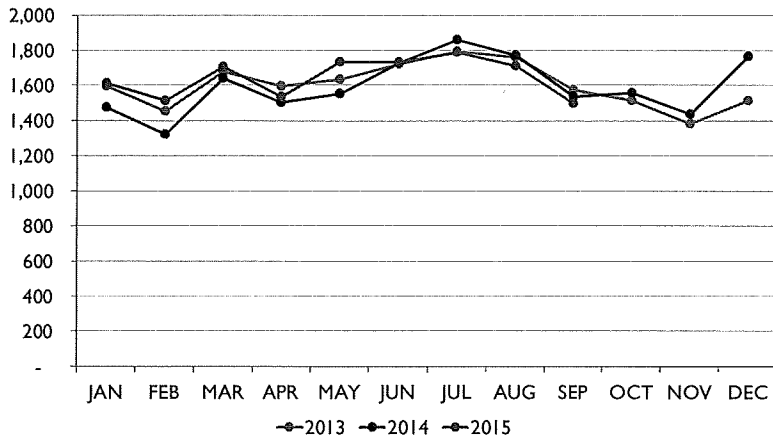


TOTAL CHARTER PASSENGERS

In September 2015, RNO served 241 charter passengers through the terminal.



MONTHLY SCHEDULED DEPARTURES

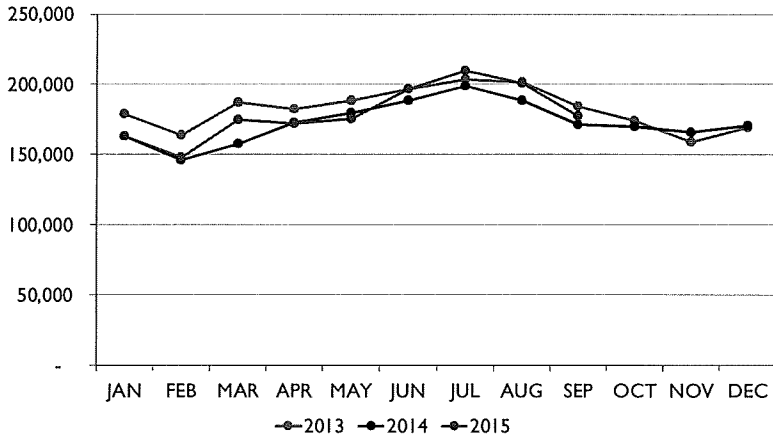


TOTAL DEPARTURES & SEATS

In September 2015, RNO handled 1,546 departures on nine commercial airlines, an increase of 0.7% versus the same period last year. Number of seats were up 3.8% for the same period.

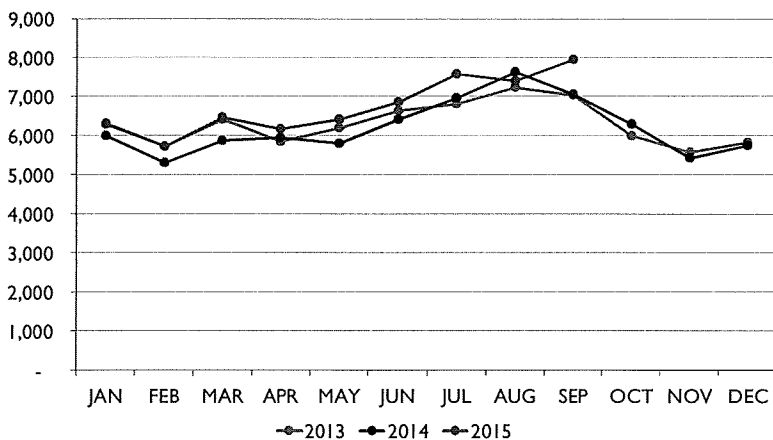
Flights and Seats by Airline September 2015 vs. September 2014		
	Flights	Seats
Alaska	4.8%	3.9%
Allegiant Air	-46.7%	-51.1%
American	18.1%	8.7%
Delta	-27.0%	-14.6%
JetBlue	n/a	n/a
Southwest	0.2%	0.1%
United	-18.5%	7.2%
Volaris	n/a	n/a
Totals	0.7%	3.8%

MONTHLY SCHEDULED SEATS



Note: American Airlines and US Airways numbers are combined

TOTAL OPERATIONS



TOTAL OPERATIONS

A total of 7,946 operations occurred at RNO in September 2015, an increase of 12.4% when compared to September 2014. Total operations include: Air Carrier, Air Taxi, General Aviation and Military operations as reported by the FAA.



Recent and Upcoming Schedule Changes

Alaska Airlines (AS)

- Starting July 1, 2015, the new schedule for non-stop flights between Reno and San Jose are as follows:
 - San Jose to Reno:
AS2250 7:30AM-8:28AM
AS2500 6:00PM-6:56PM
 - Reno to San Jose:
AS2183 6:00AM-6:57AM
AS2253 4:30PM-5:28PM
- Starting October 5, 2015, Alaska Airlines will reduce the number of daily flights between Reno and Seattle from five flights a day to four flights a day.
- Starting November 1, 2015, the airline will increase the number of daily flights between Reno and Portland from two flights a day to three flights a day.

jetBlue Airways

- Schedule for non-stop flights between Reno and New York City is as follows:
 - Through October 23 – 4 days per week (Sunday, Monday, Thursday, Friday)
 - October 20 and 21 – No flight
 - October 24 – No flight
 - October 25 to January 4 – Daily

Southwest Airlines Seasonal Reduction

- The non-stop flights between Reno and Chicago Midway will operate until October 31, 2015. The flight returns to daily schedule on March 10, 2016.

Volaris

- Starting November 2, 2015, Volaris will add a third weekly flight between Reno and Guadalajara. This flight will operate on Mondays.
- Currently, the airline serves this route on Tuesdays and Fridays.

United Parcel Service (UPS)

- Starting September 15, 2015, UPS added eight weekly flights to their current schedule at RNO. The additions include six Boeing 757s and two Airbus A300.

DHL

- Starting November 1, 2015, Southern Air will begin cargo flights on behalf of DHL at RNO. Currently, Ameriflight operates two flights a day on behalf of DHL utilizing Beechcraft 1900 aircraft. Southern Air will replace one of the Beechcraft 1900 flights with a Boeing 737-400 aircraft, a larger aircraft than Beechcraft 1900.



Reno-Tahoe
Airport Authority

Reno-Tahoe International Airport

Total Passengers September-15						
	Passengers		% Diff.	Passengers		% Diff.
	2013	2014		2015		
JAN	264,265	241,181	-8.7%	246,571		2.2%
FEB	259,299	228,035	-12.1%	234,763		3.0%
MAR	306,139	278,172	-9.1%	277,477		-0.2%
1st Quarter	829,703	747,388	-9.9%	758,811		1.5%
APR	279,418	266,800	-4.5%	256,823		-3.7%
MAY	295,494	282,277	-4.5%	276,969		-1.9%
JUN	328,755	316,720	-3.7%	319,309		0.8%
2nd Quarter	903,667	865,797	-4.2%	853,101		-1.5%
JUL	333,321	332,242	-0.3%	350,823		5.6%
AUG	322,083	318,965	-1.0%	336,948		5.6%
SEP	283,800	284,931	0.4%	297,299		4.3%
3rd Quarter	939,204	936,138	-0.3%	985,070		5.2%
OCT	262,473	266,701	1.6%			
NOV	227,213	225,384	-0.8%			
DEC	270,051	263,682	-2.4%			
4th Quarter	759,737	749,592	-1.3%			
TOTAL	3,432,311	3,298,915	-3.9%			
YTD Total		2,549,323		2,596,982		1.9%

Total Enplaned Passengers September-15				
Month	2013	2014	2015	% Diff.
JAN	133,686	121,700	124,505	2.3%
FEB	129,283	113,777	117,750	3.5%
MAR	154,633	142,542	141,314	-0.9%
APR	140,153	132,183	128,088	-3.1%
MAY	146,562	139,349	137,132	-1.6%
JUN	162,824	158,827	159,989	0.7%
JUL	165,268	162,090	172,266	6.3%
AUG	160,570	159,664	166,935	4.6%
SEP	145,740	147,458	151,127	2.5%
OCT	132,741	134,946		
NOV	114,162	112,573		
DEC	131,328	128,295		
TOTAL	1,716,950	1,653,404		
YTD Total		1,277,590	1,299,106	1.7%

Total Deplaned Passengers				
Month	2013	2014	2015	% Diff.
JAN	130,579	119,481	122,066	2.2%
FEB	130,016	114,258	117,013	2.4%
MAR	151,506	135,630	136,163	0.4%
APR	139,265	134,617	128,735	-4.4%
MAY	148,932	142,928	139,837	-2.2%
JUN	165,931	157,893	159,320	0.9%
JUL	168,053	170,152	178,557	4.9%
AUG	161,513	159,307	170,013	6.7%
SEP	138,060	137,480	146,172	6.3%
OCT	129,739	131,755		
NOV	113,051	112,811		
DEC	138,723	135,387		
TOTAL	1,715,368	1,651,699		
YTD Total		1,271,746	1,297,876	2.1%

Total Cargo September-15						
	2013	2014	% Diff.	2015		% Diff.
	Cargo in Pounds			Pounds	Metric	
JAN	10,269,546	10,303,380	0.3%	10,113,421	4,587	-1.8%
FEB	8,635,807	9,486,697	9.9%	9,418,781	4,272	-0.7%
MAR	9,457,376	9,758,391	3.2%	10,381,009	4,708	6.4%
1st Quarter	28,362,729	29,548,468	4.2%	29,913,211	13,566	1.2%
APR	8,639,172	9,876,465	14.3%	10,416,248	4,724	5.5%
MAY	9,398,212	10,269,963	9.3%	10,459,643	4,744	1.8%
JUN	9,001,339	9,679,744	7.5%	10,595,645	4,805	9.5%
2nd Quarter	27,038,723	29,826,172	10.3%	31,471,536	14,273	5.5%
JUL	10,149,807	10,863,843	7.0%	11,775,072	5,340	8.4%
AUG	10,859,694	10,853,726	-0.1%	11,031,470	5,003	1.6%
SEP	9,689,115	10,127,014	4.5%	12,360,393	5,606	22.1%
3rd Quarter	30,698,616	31,844,583	3.7%	35,166,935	15,949	10.4%
OCT	10,834,930	11,429,538	5.5%			
NOV	10,099,499	10,664,398	5.6%			
DEC	13,998,438	15,776,073	12.7%			
4th Quarter	34,932,867	37,870,009	8.4%			
TOTAL	121,032,935	129,089,232	6.7%			
YTD Total		91,219,223		96,551,682	43,788	5.8%

Enplaned Passengers & Load Factor				
Airline	Enplaned PAX	Sep-15	Sep-14	Diff.
Alaska/Horizon	16,626	83.8%	79.8%	4.0
Allegiant Air	1,036	78.0%	81.2%	-3.2
American	19,554	80.0%	96.6%	-16.5
Delta	10,917	92.9%	87.2%	5.7
jetBlue	2,866	91.0%	n/a	n/a
Southwest	66,607	81.6%	81.9%	-0.3
United	20,173	91.4%	97.1%	-5.7
US Airways	12,466	91.5%	78.9%	12.6
Volaris	882	61.6%	n/a	n/a

Source: RNO Monthly Flight Activity Reports





Inter-Office Memo
Reno-Tahoe Airport Authority

Date: October 30, 2015
To: Marily Mora, A.A.E., Dean Schultz, A.A.E., Executive Forum
From: Hasaan Azam, Manager of Air Service & Cargo Business Development
Subject: November 2015 Flight Schedule

The November 2015 Flight Schedule at the Reno-Tahoe International Airport (RNO) provides 53 peak-day non-stop departures to 15 destinations on eight commercial airlines.

In November 2015, RNO will offer a total of 1,453 scheduled departures, an increase of 8.9% when compared to the November 2014 schedule. Monthly scheduled seat capacity is up 11.2% at 168,605 for the same period.

Starting November 5, 2015, Alaska Airlines will begin non-stop daily flights between RNO and Boise Airport (BOI). Horizon Air, Alaska's sister carrier, will fly the route with a 76-seat Bombardier Q400 aircraft. It will depart Reno at 4:35 p.m. and arrive in Boise at 6:55 p.m. It will depart Boise at 6:15 p.m. and arrive in Reno at 6:44 p.m. The Boise route also offers great connectivity into another popular market, Spokane, Washington, with only a half hour connect time.

In September 2015, United Parcel Service (UPS) added eight weekly flights to their current schedule at RNO. The additions include six Boeing 757s and two Airbus A300s.

Starting November 1, 2015, Southern Air will begin cargo flights on behalf of DHL at RNO. Currently, Ameriflight operates two flights a day on behalf of DHL utilizing Beechcraft 1900 aircraft. Southern Air will replace one of the Beechcraft 1900 flights with a Boeing 737-400 aircraft, a larger aircraft than Beechcraft 1900.

JetBlue Airways began non-stop daily flights between RNO and New York City (JFK) on May 28, 2015. The airline is utilizing an Airbus A320 aircraft with 150 seats on this route.

American Airlines and US Airways merger was completed on October 16, 2015. All previous US Airways flights will now be American Airlines flights .

HA

Recent and Upcoming Changes

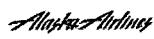
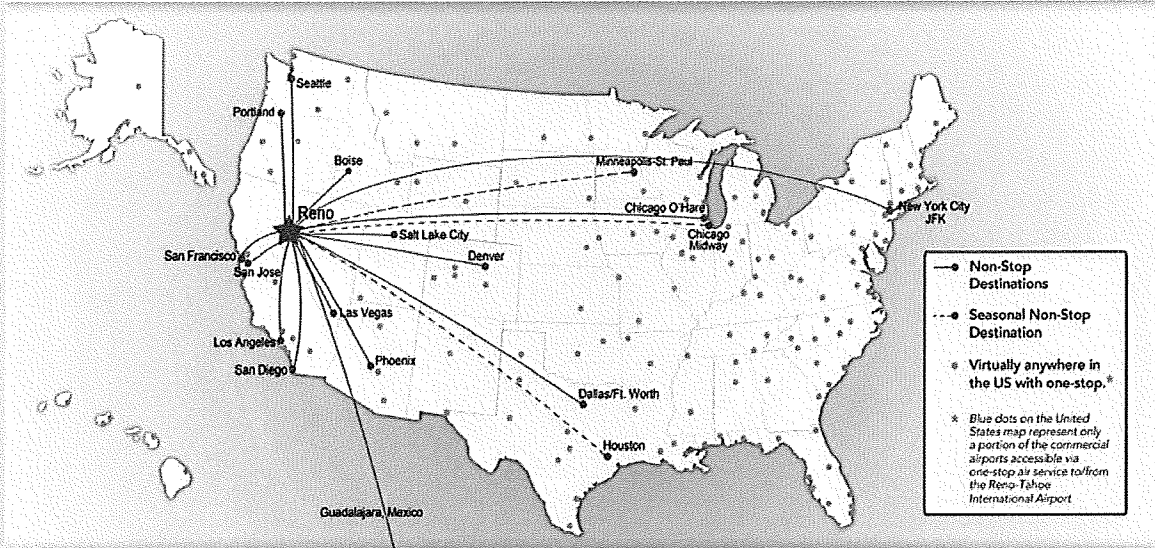
- Alaska Airlines (AS)
 - Starting July 1, 2015, the new schedule for non-stop flights between Reno and San Jose are as follows:
 - San Jose to Reno:
 - AS2250 7:30AM-8:28AM
 - AS2500 6:00PM-6:56PM
 - Reno to San Jose:
 - AS2183 6:00AM-6:57AM
 - AS2253 4:30PM-5:28PM
 - In October 2015, Alaska Airlines reduced the number of daily flights between Reno and Seattle from five flights a day to four flights a day
 - Starting November 1, 2015, the airline will increase the number of daily flights between Reno and Portland from two flights a day to three flights a day

- jetBlue Airways
 - Schedule for non-stop flights between Reno and New York City is as follows:
 - From September 13, 2015 to October 25, 2015 - Four days a week schedule; Sunday, Monday, Thursday and Friday (no flight on the 12th)
 - From October 26, 2015 to January 4, 2016 - Daily flight
 - From January 5, 2016 to February 11th - Four days a week schedule; Sunday, Monday, Thursday and Friday
 - From February 12th to February 22 - Daily flight
 - From February 25 to March 20 - Four days a week schedule; Sunday, Monday, Thursday and Friday

- Southwest Airlines Seasonal Reduction
 - The non-stop daily flights between Reno and Chicago Midway will operate until October 31, 2015. This flight is scheduled to return on March 10, 2016.

- Volaris
 - Starting November 2, 2015, Volaris will add a third weekly flight between Reno and Guadalajara. The additional flight will operate on Mondays.
 - Currently, the airline serves this route on Tuesdays and Fridays.

Flights from Reno-Tahoe International Airport



allegiant



jetBlue

Southwest



volaris

Visit www.renoairport.com for an online searchable flight tool.

Reference

Airline Codes		Airport Codes	
AA	American Airlines	DEN	Denver, CO
AS	Alaska Airlines	DFW	Dallas/Ft. Worth, TX
B6	jetBlue Airways	GDL	Guadalajara, Mexico
CP	Compass Airlines	IAH	Houston, TX
DL	Delta Air Lines	JFK	New York City, NY
G4	Allegiant Air	LAS	Las Vegas, NV
MQ	American Eagle	LAX	Los Angeles, CA
OO	SkyWest Airlines	MDW	Chicago-Midway, IL
QX	Horizon Air	MSP	Minneapolis-St. Paul
UA	United Airlines	ORD	Chicago-O'Hare, IL
US	US Airways	PDX	Portland, OR
WN	Southwest Airlines	PHX	Phoenix, AZ
YV	Mesa Airlines	SAN	San Diego, CA
Y4	Volaris Airlines	SEA	Seattle, WA
		SFO	San Francisco, CA
Equipment Codes		SJC	San Jose, CA
319	Airbus A319	SLC	Salt Lake City, UT
320	Airbus A320	Operating Days	
733, 735, 738, 73G	Boeing 737 (all variants)	1	Monday
757	Boeing 757	2	Tuesday
CRJ, CR7, CR9	Canadair Regional Jet (all variants)	3	Wednesday
DH4	DeHavilland Dash 8 Q400	4	Thursday
M80, M83	McDonnell Douglas MD-80	5	Friday
ERD	Embraer Regional Jet	6	Saturday
		7	Sunday

Peak Day Non-Stop Daily Departures by Destination and Carrier

November 2015

Airport	Code	Alaska	Allegiant	American	Delta	jetBlue	Southwest	United	Volaris	Totals	Percent of Total	Total Seats
Boise, ID	BOI	1								1	2%	76
Denver, CO	DEN						2	2		4	8%	564
Dallas/Ft. Worth, TX	DFW			2						2	4%	280
Guadalajara, MX	GDL								1	1	2%	179
Houston, TX	IAH							0		0	0%	0
New York City, NY	JFK					1				1	2%	150
Las Vegas, NV	LAS		1				10			11	21%	1,596
Los Angeles, CA	LAX			4			3	1		8	15%	783
Chicago, IL (Midway)	MDW						0			0	0%	0
Minneapolis, MN	MSP				0					0	0%	0
Chicago, IL (O'Hare)	ORD			1						1	2%	160
Portland, OR	PDX	3								3	6%	228
Phoenix, AZ	PHX			4			2			6	11%	760
San Diego, CA	SAN						2			2	4%	286
Seattle, WA	SEA	4								4	8%	304
San Francisco, CA	SFO							4		4	8%	226
Salt Lake City, UT	SLC				3					3	6%	470
San Jose, CA	SJC	2								2	4%	152
Total		10	1	11	3	1	19	7	1	53	98%	6,138

Notes:

Allegiant Air's Las Vegas flights operate on Fridays and Sundays

Volaris' Guadalajara flight operates on Mondays, Tuesdays and Fridays

American Airlines' fifth flight to Phoenix will operate on 20, 24, 25, 29 and 30 (not included in the table)

American Airlines' second flight to Dallas will operate on 1-4, 24, 25 and 29-30.

Peak Day Departures and Seats Change Summary

Airline/Destination	Code	November 2015			October 2015			November 2014			October 2014			November 2014			October 2014		
		Flights	Change vs Prior Month	% Change vs Prior Month	Flights	Change vs Prior Month	% Change vs Prior Month	Flights	Change vs Prior Month	% Change vs Prior Month	Flights	Change vs Prior Month	% Change vs Prior Month	Flights	Change vs Prior Month	% Change vs Prior Month	Flights	Change vs Prior Month	% Change vs Prior Month
Alaska - (AS)																			
Boise, ID	BOI	10	2	11.1%	2	25.0%	1	11.1%	760	684	152	76	25.0%	76	11.1%	76	76	0.0%	
Portland, OR	PDX	3	1	-	1	-	1	-	76	76	76	76	-	76	-	76	76	0.0%	
Seattle, WA	SEA	4	0	-20.0%	-1	50.0%	1	50.0%	228	152	76	76	50.0%	76	50.0%	76	76	50.0%	
San Jose, CA	SJC	2	0	0.0%	0	0.0%	0	0.0%	304	380	0	-76	0.0%	0	0.0%	0	-76	-20.0%	
Allegiant - (G4)																			
Las Vegas, NV	LAS	1	0	0.0%	0	0.0%	0	0.0%	166	166	0	0	0.0%	0	0.0%	0	0	0.0%	
American Airlines (AA)																			
Dallas/Ft. Worth, TX	DFW	11	0	-8.3%	1	0.0%	1	10.0%	1,218	1,009	-75	209	-5.9%	209	20.7%	209	209	0.0%	
Los Angeles, CA	LAX	4	0	0.0%	0	0.0%	0	100.0%	280	140	0	140	0.0%	140	100.0%	140	140	0.0%	
Chicago, IL (O'Hare)	ORD	1	0	0.0%	0	0.0%	0	0.0%	304	252	26	52	9.4%	52	20.6%	52	52	0.0%	
Phoenix	PHX	4	-1	-20.0%	0	-20.0%	0	0.0%	160	140	0	20	0.0%	20	14.3%	20	20	0.0%	
Delta Airlines (DL)																			
Salt Lake City, UT	SLC	3	0	0.0%	0	0.0%	0	0.0%	470	460	20	10	4.4%	10	2.2%	10	10	4.4%	
Minneapolis, MN	MSP	3	0	0.0%	0	-	0	-	470	460	20	10	4.4%	10	2.2%	10	10	4.4%	
JetBlue Airways (B6)																			
New York City, NY	JFK	1	0	0.0%	1	0.0%	1	-	150	150	0	150	0.0%	150	0.0%	150	150	0.0%	
Southwest Airlines (WN)																			
Denver, CO	DEN	19	-1	-5.0%	0	0.0%	0	0.0%	2,717	2,860	-143	0	-5.0%	0	0.0%	0	0	0.0%	
Las Vegas, NV	LAS	10	0	0.0%	0	0.0%	0	0.0%	286	286	0	0	0.0%	0	0.0%	0	0	0.0%	
Los Angeles, CA	LAX	3	0	0.0%	0	0.0%	0	0.0%	1,430	1,430	0	0	0.0%	0	0.0%	0	0	0.0%	
Chicago, IL (Midway)	MDW	1	-1	-100.0%	0	-100.0%	0	-	429	429	0	0	0.0%	0	0.0%	0	0	0.0%	
Phoenix, AZ	PHX	2	0	0.0%	0	0.0%	0	0.0%	0	143	-143	0	-100.0%	0	-	0	0	-	
San Diego, CA	SAN	2	0	0.0%	0	0.0%	0	0.0%	286	286	0	0	0.0%	0	0.0%	0	0	0.0%	
United Airlines (UA)																			
Denver, CO	DEN	7	0	0.0%	1	0.0%	1	16.7%	554	496	4	58	0.7%	58	11.7%	58	58	0.0%	
Houston, TX	IAH	2	0	0.0%	0	0.0%	0	0.0%	278	256	-22	22	-7.3%	22	8.6%	22	22	-7.3%	
Los Angeles, CA	LAX	1	0	0.0%	0	0.0%	0	0.0%	0	0	0	0	-	0	-	0	0	-	
San Francisco, CA	SFO	4	0	0.0%	1	0.0%	1	33.3%	50	50	0	0	0.0%	0	0.0%	0	0	0.0%	
Volans Airlines (Y4)																			
Guadalajara, MX	GDL	1	0	0.0%	1	0.0%	1	-	179	179	0	179	0.0%	179	0.0%	179	179	0.0%	
AIRPORT TOTALS		53	53	10.4%	5	0.0%	5	10.4%	6,214	6,256	-42	682	-0.7%	682	12.3%	682	682	-0.7%	

Peak Day Departures and Seats Change Summary

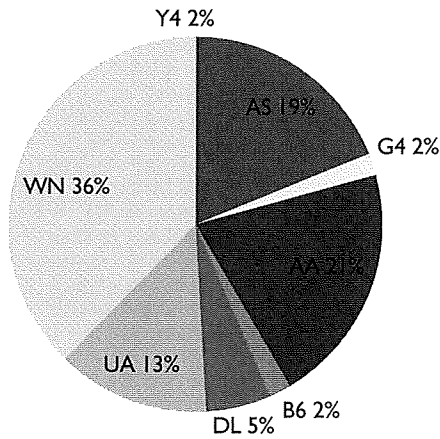
Airline/Destination	Code	November 2015	October 2015	November 2014	Change vs Prior Month	Change vs Prior Year	% Change vs Prior Month	% Change vs Prior Year	November 2015	October 2015	November 2014	Change vs Prior Month	Change vs Prior Year	% Change vs Prior Month	% Change vs Prior Year
AIRLINES TOTALS															
Alaska Airlines	AS	10	8	9	2	1	25.0%	11.1%	760	608	684	152	76	25.0%	11.1%
Allegiant Air	G4	1	1	1	0	0	0.0%	0.0%	166	166	166	0	0	0.0%	0.0%
American Airlines	AA	11	12	10	-1	1	-8.3%	10.0%	1,218	1,293	1,009	-75	209	-5.8%	20.7%
Delta Air Lines	DL	3	3	3	0	0	0.0%	0.0%	470	450	460	20	10	4.4%	2.2%
JetBlue Airways	B6	1	1	0	1	1	0.0%	0.0%	150	150	0	0	150	0.0%	-
Southwest Airlines	WN	19	20	19	-1	0	-5.0%	0.0%	2,717	2,860	2,717	-143	0	-5.0%	0.0%
United Airlines	UA	7	7	6	0	1	0.0%	16.7%	554	550	496	4	58	0.7%	11.7%
Volaris Airlines	Y4	1	1	0	0	1	0.0%	-	179	179	0	0	179	0.0%	-
Grand Total - All Airlines		53	53	48	0	5	0.0%	10.4%	6,214	6,256	5,532	-42	682	-0.7%	12.3%
TOTALS BY CITY															
Boise, ID	BOI	1	0	0	1	1	-	-	76	0	0	76	76	-	-
Denver, CO	DEN	4	4	4	0	0	0.0%	0.0%	564	586	542	-22	22	-3.8%	4.1%
Dallas/Ft. Worth, TX	DFW	2	2	1	0	1	0.0%	100.0%	280	280	140	0	140	0.0%	100.0%
Guadalajara, MX	GDL	1	1	0	0	1	0.0%	-	179	179	0	0	179	0.0%	-
Houston, TX	IAH	0	0	0	0	0	-	-	0	0	0	0	0	-	-
Las Vegas, NV	LAS	11	11	11	0	0	0.0%	0.0%	1,596	1,596	1,596	0	0	0.0%	0.0%
Los Angeles, CA	LAX	8	8	8	0	0	0.0%	0.0%	783	757	731	26	52	3.4%	7.1%
Chicago, IL (Midway)	MDW	0	1	0	-1	0	-100.0%	-	0	143	0	-143	0	-100.0%	-
Chicago, IL (O'Hare)	ORD	1	1	1	0	0	0.0%	0.0%	160	160	140	0	20	0.0%	14.3%
Minneapolis, MN	MSP	0	0	0	0	0	-	-	0	0	0	0	0	-	-
New York City	JFK	1	1	0	0	1	0.0%	-	150	150	0	0	150	0.0%	-
Portland, OR	PDX	3	2	2	1	1	50.0%	50.0%	228	152	152	76	76	50.0%	50.0%
Phoenix, AZ	PHX	6	7	6	-1	0	-14.3%	0.0%	760	861	763	-101	-3	-11.7%	-0.4%
San Diego, CA	SAN	2	2	2	0	0	0.0%	0.0%	286	286	286	0	0	0.0%	0.0%
Seattle, WA	SEA	4	4	5	0	-1	0.0%	-20.0%	304	304	380	0	-76	0.0%	-20.0%
San Francisco, CA	SFO	4	4	3	0	1	0.0%	33.3%	226	200	190	26	36	13.0%	18.9%
Salt Lake City, UT	SLC	3	3	3	0	0	0.0%	0.0%	470	450	460	20	10	4.4%	2.2%
San Jose, CA	SJC	2	2	2	0	0	0.0%	0.0%	152	152	152	0	0	0.0%	0.0%
Grand Total - All Cities		53	53	48	0	5	0.0%	10.4%	6,214	6,256	5,532	-42	682	-0.7%	12.3%

Peak Day Scheduled Non-Stop Daily Flights by Concourse

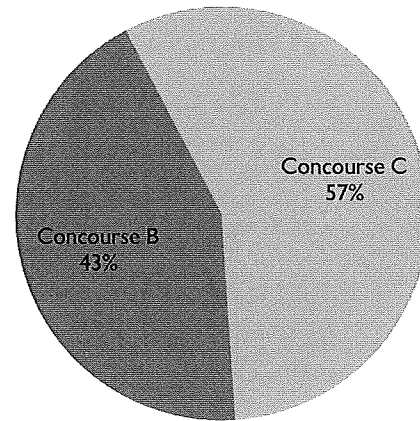
November 2015

Airline	Code	Daily Flights	Concourse	Airport	Daily Seats	Concourse	Airport
Delta	DL	3	13.0%	5.7%	470	14.1%	7.6%
jetBlue	B6	1	4.3%	1.9%	150	4.5%	2.4%
Southwest	WN	19	82.6%	35.8%	2,717	81.4%	43.7%
B-Concourse		23	100.0%	43.4%	3,337	100.0%	53.7%
Alaska	AS	10	33.3%	18.9%	760	26.4%	12.2%
Allegiant	G4	1	3.3%	1.9%	166	5.8%	2.7%
American	AA	11	36.7%	20.8%	1,218	42.3%	19.6%
United	UA	7	23.3%	13.2%	554	19.3%	8.9%
Volaris	Y4	1	3.3%	1.9%	179	6.2%	2.9%
C-Concourse		30	100.0%	56.6%	2,877	100.0%	46.3%
Grand Total		53		100.0%	6,214		100.0%

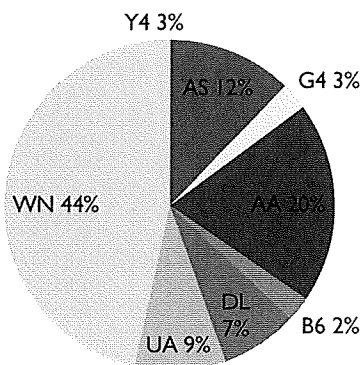
Percent of Scheduled Flights by Airlines



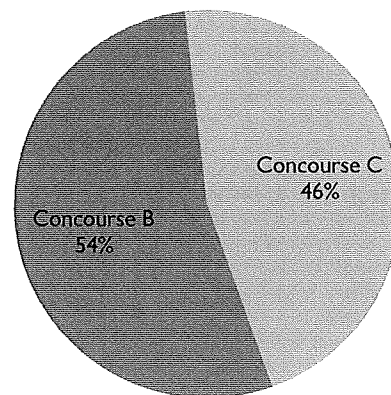
Percent of Scheduled Flights by Concourse



Percent of Scheduled Seats by Airline

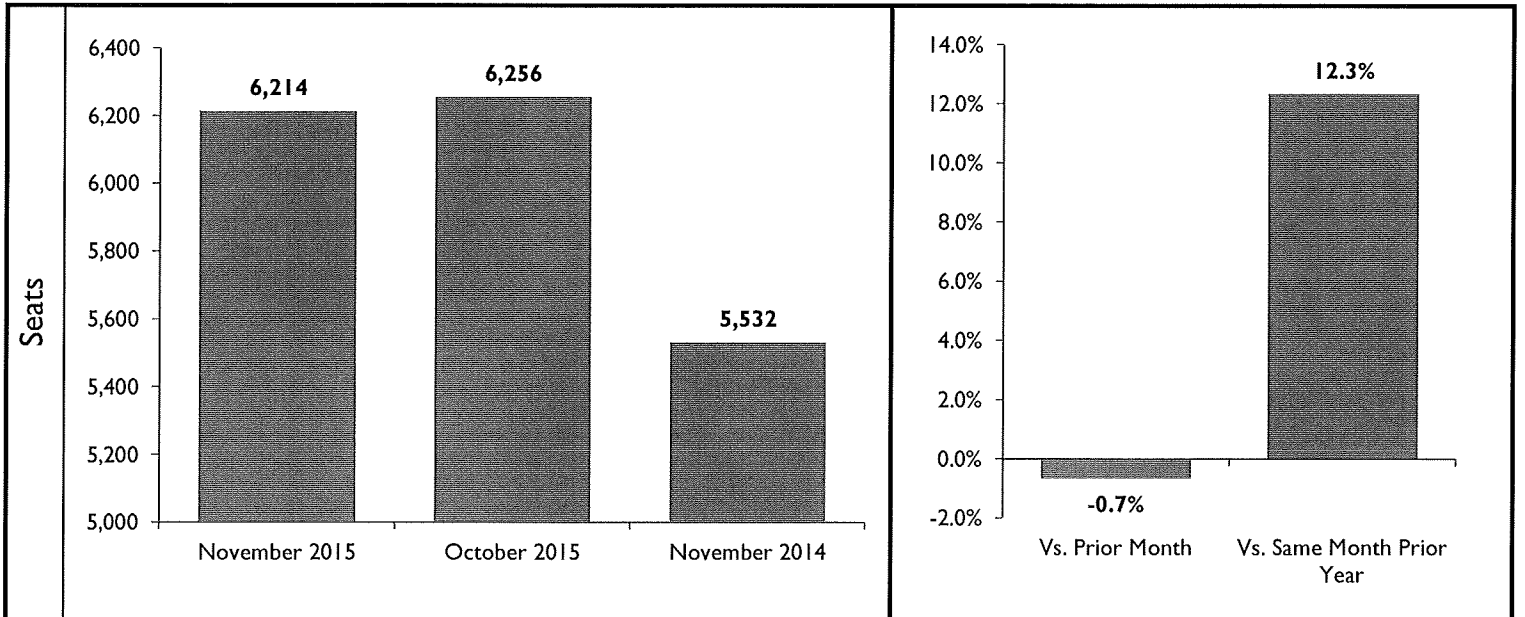
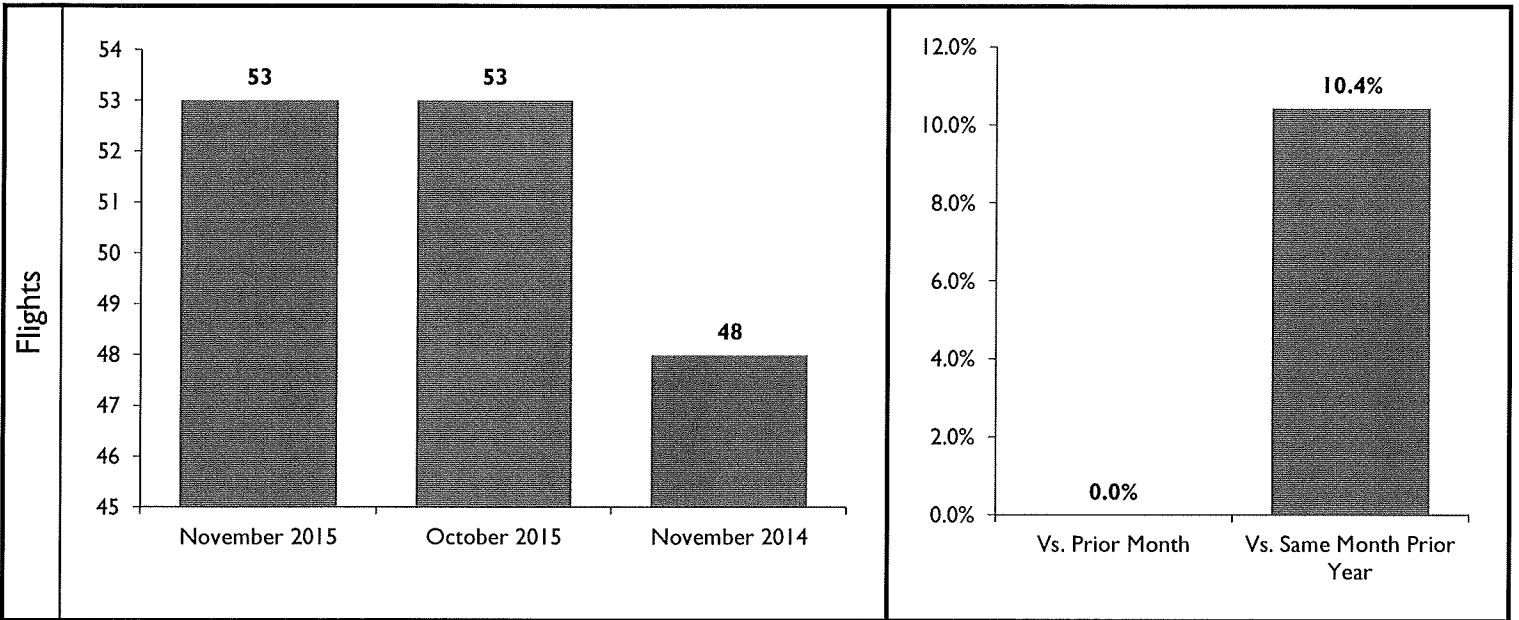


Percent of Scheduled Seats by Concourse



Peak Day Scheduled Non-Stop Comparison

November 2015



Non-Stop Departures

November 2015

Marketing Airline	Operating Airline	Origin	Destination	Flight	Aircraft	Seats	Departure Time	Arrival Time	Days of Operation
AA	AA	RNO	DFW	1441	M80	140	0600	1115	123....
AA	AA	RNO	DFW	1441	738	160	0600	1122	...4567
AA	AA	RNO	DFW	2314	M80	140	1204	1720	123....
AA	CP	RNO	LAX	5905	E75	76	0530	0701	...4567
AA	CP	RNO	LAX	5905	E75	76	0530	0703	123....
AA	CP	RNO	LAX	5928	E75	76	1100	1231	...4567
AA	CP	RNO	LAX	5928	E75	76	1101	1234	123....
AA	CP	RNO	LAX	5980	E75	76	1510	1641	...45..
AA	OO	RNO	LAX	2900	CRJ	50	1520	1655	123....
AA	CP	RNO	LAX	5948	E75	76	1840	2011	...4567
AA	CP	RNO	LAX	5948	E75	76	1945	2118	123....
AA	AA	RNO	ORD	86	738	160	0800	1352	123....
AA	AA	RNO	ORD	1490	738	160	0800	1407	...4567
AA	AA	RNO	PHX	489	319	124	0620	0903	123....
AA	AA	RNO	PHX	489	319	124	0620	0907	...45.7
AA	AA	RNO	PHX	896	319	124	0620	09076.
AA	AA	RNO	PHX	440	319	124	0925	12096.
AA	AA	RNO	PHX	471	319	124	0925	12097
AA	AA	RNO	PHX	483	319	124	0925	1209	...45..
AA	AA	RNO	PHX	483	319	124	0930	1211	123....
AA	AA	RNO	PHX	473	320	150	1230	1510	123....
AA	AA	RNO	PHX	553	320	150	1231	15106.
AA	AA	RNO	PHX	574	320	150	1231	1510	...45..
AA	AA	RNO	PHX	594	319	124	1231	15107
AA	YV	RNO	PHX	5603	CR9	76	1615	1854	...45.7
AA	YV	RNO	PHX	5632	CR9	76	1615	18546.
AA	YV	RNO	PHX	5648	CR9	76	1615	1859	123....
AS	QX	RNO	BOI	2164	DH4	76	1635	1855	...4567
AS	QX	RNO	PDX	2150	DH4	76	1010	1156	1234567
AS	QX	RNO	PDX	2176	DH4	76	1410	1555	1.345.7
AS	QX	RNO	PDX	2252	DH4	76	1915	2100	1234567
AS	QX	RNO	SEA	2250	DH4	76	0905	1113	1234567
AS	QX	RNO	SEA	2442	DH4	76	1115	1320	1234567
AS	QX	RNO	SEA	2256	DH4	76	1835	2045	1234567
AS	QX	RNO	SEA	2448	DH4	76	1955	2208	1234567
AS	QX	RNO	SJC	2183	DH4	76	0600	0705	1234567
AS	QX	RNO	SJC	2320	DH4	76	1615	1719	1234567
B6	B6	RNO	JFK	80	320	150	2357	0756	1234567
DL	DL	RNO	SLC	1801	320	160	0620	08526.
DL	DL	RNO	SLC	1801	320	160	0620	0855	12345.7
DL	DL	RNO	SLC	1336	319	126	1209	1427	.2.....

Non-Stop Departures

November 2015

Marketing Airline	Operating Airline	Origin	Destination	Flight	Aircraft	Seats	Departure Time	Arrival Time	Days of Operation
DL	DL	RNO	SLC	1336	319	126	1209	14296.
DL	DL	RNO	SLC	1336	320	150	1209	1430	1.345.7
DL	DL	RNO	SLC	2468	320	160	1659	1924	12345.7
G4	G4	RNO	LAS	431	M80	166	1023	11437
G4	G4	RNO	LAS	431	M80	166	1813	19335..
UA	UA	RNO	DEN	422	320	150	0600	0912	1.345..
UA	UA	RNO	DEN	495	320	150	0600	09127
UA	UA	RNO	DEN	1584	320	150	0600	09126.
UA	UA	RNO	DEN	1665	320	150	0600	0912	.2.....
UA	UA	RNO	DEN	401	319	128	1322	1626	12345..
UA	UA	RNO	DEN	401	320	150	1342	16427
UA	OO	RNO	DEN	6266	CRJ	50	1342	16466.
UA	OO	RNO	LAX	5634	CRJ	50	1929	2105	..3....
UA	OO	RNO	LAX	5634	CRJ	50	1935	2111	12.456.
UA	OO	RNO	LAX	5634	CRJ	50	1939	21157
UA	OO	RNO	SFO	5628	E7W	76	0515	0631	12345.7
UA	OO	RNO	SFO	5628	E7W	76	0620	07366.
UA	OO	RNO	SFO	6336	CR7	70	1028	1144	123456.
UA	OO	RNO	SFO	6336	CR7	70	1051	12077
UA	OO	RNO	SFO	6387	CRJ	50	1214	13227
UA	OO	RNO	SFO	6454	CRJ	50	1334	1442	12345..
UA	OO	RNO	SFO	6454	E7W	76	1430	15386.
UA	OO	RNO	SFO	5528	CRJ	50	1709	1819	1.4...
UA	OO	RNO	SFO	6387	CRJ	50	1709	1819	.23.6.
UA	OO	RNO	SFO	5528	CR7	70	1720	18307
UA	OO	RNO	SFO	5528	E7W	76	1722	18325..
WN	WN	RNO	DEN	259	73W	143	0540	0855	12345..
WN	WN	RNO	DEN	2203	73W	143	1320	16256.
WN	WN	RNO	DEN	1408	73W	143	1400	1705	12345.7
WN	WN	RNO	LAS	6333	73W	143	0525	0645	12345..
WN	WN	RNO	LAS	3336	73W	143	0600	07206.
WN	WN	RNO	LAS	3130	73W	143	0635	0755	12345.7
WN	WN	RNO	LAS	3731	73W	143	0740	09006.
WN	WN	RNO	LAS	1250	73W	143	0750	0910	12345.7
WN	WN	RNO	LAS	3564	73W	143	0905	10206.
WN	WN	RNO	LAS	1576	73W	143	1000	1115	12345.7
WN	WN	RNO	LAS	775	73W	143	1055	12106.
WN	WN	RNO	LAS	1769	73W	143	1125	1240	12345.7
WN	WN	RNO	LAS	1410	73W	143	1345	1500	12345.7
WN	WN	RNO	LAS	2680	73W	143	1405	15206.
WN	WN	RNO	LAS	287	73W	143	1500	1610	12345.7

Non-Stop Departures

November 2015

Marketing Airline	Operating Airline	Origin	Destination	Flight	Aircraft	Seats	Departure Time	Arrival Time	Days of Operation
WN	WN	RNO	LAS	1886	73W	143	1525	16406.
WN	WN	RNO	LAS	2537	73W	143	1645	1800	12345.7
WN	WN	RNO	LAS	3253	73W	143	1645	18006.
WN	WN	RNO	LAS	427	73W	143	1805	1920	12345.7
WN	WN	RNO	LAS	3456	73W	143	1830	19456.
WN	WN	RNO	LAS	1351	73W	143	2045	2155	.2345.7
WN	WN	RNO	LAX	2279	73W	143	0610	07356.
WN	WN	RNO	LAX	2226	73W	143	0625	0800	12345..
WN	WN	RNO	LAX	4033	73W	143	0700	08357
WN	WN	RNO	LAX	3064	73W	143	1230	13556.
WN	WN	RNO	LAX	2535	73W	143	1300	1420	12345.7
WN	WN	RNO	LAX	648	73W	143	2035	2155	12345.7
WN	WN	RNO	PHX	319	73W	143	0600	0845	12345.7
WN	WN	RNO	PHX	1918	73W	143	1330	1610	12345.7
WN	WN	RNO	SAN	2713	73W	143	0730	09056.
WN	WN	RNO	SAN	2072	73W	143	0930	1100	12345.7
WN	WN	RNO	SAN	1849	73W	143	1205	13306.
WN	WN	RNO	SAN	1008	73W	143	1625	1750	12345..
WN	WN	RNO	SAN	5885	73W	143	1625	17507
Y4	Y4	RNO	GDL	999	320	179	1520	2055	12..5..

Non-Stop Arrivals

November 2015

Marketing Airline	Operating Airline	Origin	Destination	Flight	Aircraft	Seats	Departure Time	Arrival Time	Days of Operation
AA	AA	DFW	RNO	1446	M80	140	0915	1050	123....
AA	AA	DFW	RNO	1497	M80	140	1715	1849	12.....
AA	AA	DFW	RNO	1497	738	160	1715	1849	...3....
AA	AA	DFW	RNO	1497	738	160	1720	1856	...4567
AA	CP	LAX	RNO	5928	E75	76	0900	1030	...4567
AA	CP	LAX	RNO	5928	E75	76	0900	1031	123....
AA	CP	LAX	RNO	5980	E75	76	1315	1440	...45..
AA	OO	LAX	RNO	2900	CRJ	50	1320	1452	123....
AA	CP	LAX	RNO	5942	E75	76	1638	1805	...4567
AA	CP	LAX	RNO	5942	E75	76	1745	1912	123....
AA	CP	LAX	RNO	5904	E75	76	2135	2257	...4567
AA	CP	LAX	RNO	5904	E75	76	2142	2310	123....
AA	AA	ORD	RNO	1628	738	160	1729	1952	...4567
AA	AA	ORD	RNO	87	738	160	1730	1951	123....
AA	AA	PHX	RNO	531	320	150	1050	1140	123....
AA	AA	PHX	RNO	531	319	124	1050	11467
AA	AA	PHX	RNO	531	320	150	1050	1146	...456.
AA	YV	PHX	RNO	5597	CR9	76	1445	1533	123....
AA	YV	PHX	RNO	5597	CR9	76	1445	1535	...45.7
AA	YV	PHX	RNO	5632	CR9	76	1445	15356.
AA	AA	PHX	RNO	523	319	124	1740	1825	123....
AA	AA	PHX	RNO	523	319	124	1740	1831	...4567
AA	AA	PHX	RNO	528	319	124	2105	2154	123....
AA	AA	PHX	RNO	528	319	124	2105	2159	...4567
AS	QX	BOI	RNO	2157	DH4	76	1815	1844	...4567
AS	QX	PDX	RNO	2141	DH4	76	0910	1045	1234567
AS	QX	PDX	RNO	2173	DH4	76	1200	1335	1.345.7
AS	QX	PDX	RNO	2253	DH4	76	1410	1545	1234567
AS	QX	SEA	RNO	2441	DH4	76	0745	0936	1234567
AS	QX	SEA	RNO	2257	DH4	76	1410	1601	1234567
AS	QX	SEA	RNO	2255	DH4	76	1615	1805	1234567
AS	QX	SEA	RNO	2229	DH4	76	2235	0025	1234567
AS	QX	SJC	RNO	2250	DH4	76	0735	0834	1234567
AS	QX	SJC	RNO	2321	DH4	76	1825	1924	1234567
B6	B6	JFK	RNO	81	320	150	1941	2306	1234567
DL	DL	SLC	RNO	1336	319	126	1100	11276.
DL	DL	SLC	RNO	1336	319	126	1100	1128	.2.....
DL	DL	SLC	RNO	1336	320	150	1100	1129	1.345.7
DL	DL	SLC	RNO	2468	320	160	1525	1554	12345.7
DL	DL	SLC	RNO	2043	320	150	1955	20276.
DL	DL	SLC	RNO	2043	320	160	2155	2227	12345.7
G4	G4	LAS	RNO	430	M80	166	0821	09437
G4	G4	LAS	RNO	430	M80	166	1611	17335..
UA	UA	DEN	RNO	295	319	128	1114	1233	.2.....
UA	UA	DEN	RNO	295	319	128	1118	1237	1.345..
UA	UA	DEN	RNO	295	320	150	1132	12477
UA	OO	DEN	RNO	6372	CRJ	50	1145	13046.
UA	UA	DEN	RNO	296	320	150	1911	2031	123456.
UA	UA	DEN	RNO	296	320	150	2005	21257

Non-Stop Arrivals

November 2015

Marketing Airline	Operating Airline	Origin	Destination	Flight	Aircraft	Seats	Departure Time	Arrival Time	Days of Operation
UA	OO	LAX	RNO	6450	CR7	70	0818	0949	123456.
UA	OO	LAX	RNO	6450	CR7	70	0845	10167
UA	OO	SFO	RNO	6270	CRJ	50	1040	11447
UA	OO	SFO	RNO	6260	CRJ	50	1200	1304	12345..
UA	OO	SFO	RNO	6260	E7W	76	1250	13546.
UA	OO	SFO	RNO	6270	CRJ	50	1530	1634	1234....
UA	OO	SFO	RNO	6331	CRJ	50	1530	16346.
UA	OO	SFO	RNO	6267	CR7	70	1540	16457
UA	OO	SFO	RNO	6270	E7W	76	1542	16475..
UA	OO	SFO	RNO	5634	CRJ	50	1758	1859	..3....
UA	OO	SFO	RNO	5634	CRJ	50	1800	1905	12.456.
UA	OO	SFO	RNO	5634	CRJ	50	1804	19097
UA	OO	SFO	RNO	6220	E7W	76	2259	2359	1234567
WN	WN	DEN	RNO	1574	73W	143	0810	0930	12345..
WN	WN	DEN	RNO	3658	73W	143	0900	10256.
WN	WN	DEN	RNO	2500	73W	143	2210	2330	12345.7
WN	WN	LAS	RNO	2775	73W	143	0600	0720	12345..
WN	WN	LAS	RNO	2070	73W	143	0745	0900	12345..
WN	WN	LAS	RNO	532	73W	143	0810	09307
WN	WN	LAS	RNO	3683	73W	143	0900	10206.
WN	WN	LAS	RNO	1768	73W	143	0935	1055	12345.7
WN	WN	LAS	RNO	3757	73W	143	1055	12156.
WN	WN	LAS	RNO	3044	73W	143	1140	1300	12345.7
WN	WN	LAS	RNO	3586	73W	143	1215	13356.
WN	WN	LAS	RNO	2547	73W	143	1300	1420	12345.7
WN	WN	LAS	RNO	1187	73W	143	1410	15306.
WN	WN	LAS	RNO	1008	73W	143	1430	1550	12345..
WN	WN	LAS	RNO	5885	73W	143	1430	15507
WN	WN	LAS	RNO	788	73W	143	1600	17206.
WN	WN	LAS	RNO	2361	73W	143	1615	1735	12345.7
WN	WN	LAS	RNO	2860	73W	143	1725	18456.
WN	WN	LAS	RNO	2818	73W	143	1845	2005	12345.7
WN	WN	LAS	RNO	798	73W	143	1850	20106.
WN	WN	LAS	RNO	2741	73W	143	2015	21306.
WN	WN	LAS	RNO	2857	73W	143	2015	2130	12345.7
WN	WN	LAS	RNO	331	73W	143	2135	2250	.2345.7
WN	WN	LAX	RNO	2534	73W	143	1110	1230	12345.7
WN	WN	LAX	RNO	2574	73W	143	1255	14156.
WN	WN	LAX	RNO	2536	73W	143	1455	1615	12345.7
WN	WN	LAX	RNO	1917	73W	143	1905	20256.
WN	WN	LAX	RNO	236	73W	143	2145	2305	12345.7
WN	WN	PHX	RNO	1408	73W	143	1235	1325	12345.7
WN	WN	PHX	RNO	354	73W	143	2130	2220	12345.7
WN	WN	SAN	RNO	3339	73W	143	1030	12006.
WN	WN	SAN	RNO	2868	73W	143	1145	1315	12345..
WN	WN	SAN	RNO	4029	73W	143	1145	13157
WN	WN	SAN	RNO	3456	73W	143	1625	18006.
WN	WN	SAN	RNO	1351	73W	143	1840	2010	12345.7
Y4	Y4	GDL	RNO	998	320	179	1130	1350	12..5..

Reno-Tahoe International Airport

Actual Hourly Schedule - Flights and Seats

9th - 15th, November, 2015

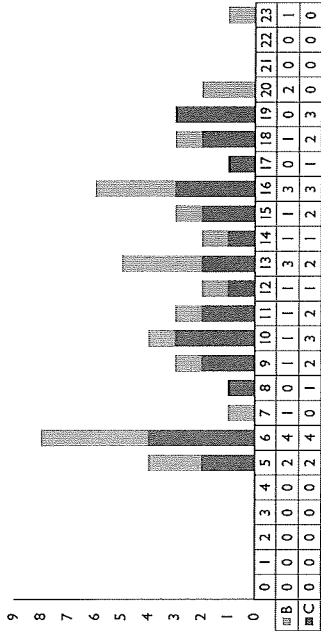
	Monday			Tuesday			Wednesday			Thursday			Friday			Saturday			Sunday											
	Seats	Arr	Time	Seats	Arr	Time	Seats	Arr	Time	Seats	Arr	Time	Seats	Arr	Time	Seats	Arr	Time	Seats	Arr	Time	Seats	Arr	Time	Seats	Arr	Time			
A	0	0	0000	0	0	0000	0	0	0000	0	0	0000	0	0	0000	0	0	0000	0	0	0000	0	0	0000	0	0	0000	0	0	0000
i	0	0	0100	0	0	0100	0	0	0100	0	0	0100	0	0	0100	0	0	0100	0	0	0100	0	0	0100	0	0	0100	0	0	0100
r	0	0	0200	0	0	0200	0	0	0200	0	0	0200	0	0	0200	0	0	0200	0	0	0200	0	0	0200	0	0	0200	0	0	0200
o	0	0	0300	0	0	0300	0	0	0300	0	0	0300	0	0	0300	0	0	0300	0	0	0300	0	0	0300	0	0	0300	0	0	0300
t	0	0	0400	0	0	0400	0	0	0400	0	0	0400	0	0	0400	0	0	0400	0	0	0400	0	0	0400	0	0	0400	0	0	0400
h	0	0	0500	4	438	0500	4	438	0500	4	438	0500	4	438	0500	4	438	0500	4	438	0500	4	438	0500	4	438	0500	4	438	0500
l	0	0	0600	8	1,099	0600	8	1,099	0600	8	1,099	0600	8	1,099	0600	8	1,099	0600	8	1,099	0600	8	1,099	0600	8	1,099	0600	8	1,099	0600
e	143	1	0700	1	143	0700	1	143	0700	1	143	0700	1	143	0700	1	143	0700	1	143	0700	1	143	0700	1	143	0700	1	143	0700
p	76	1	0800	1	160	0800	1	160	0800	1	160	0800	1	160	0800	1	160	0800	1	160	0800	1	160	0800	1	160	0800	1	160	0800
o	412	4	0900	3	343	0900	3	343	0900	3	343	0900	3	343	0900	3	343	0900	3	343	0900	3	343	0900	3	343	0900	3	343	0900
r	295	3	1000	3	269	1000	3	269	1000	3	269	1000	3	269	1000	3	269	1000	3	269	1000	3	269	1000	3	269	1000	3	269	1000
t	300	2	1100	2	219	1100	2	219	1100	2	219	1100	2	219	1100	2	219	1100	2	219	1100	2	219	1100	2	219	1100	2	219	1100
o	271	2	1200	2	300	1200	2	300	1200	2	300	1200	2	300	1200	2	300	1200	2	300	1200	2	300	1200	2	300	1200	2	300	1200
h	734	6	1300	5	607	1300	5	607	1300	5	607	1300	5	607	1300	5	607	1300	5	607	1300	5	607	1300	5	607	1300	5	607	1300
l	219	2	1400	2	219	1400	2	219	1400	2	219	1400	2	219	1400	2	219	1400	2	219	1400	2	219	1400	2	219	1400	2	219	1400
e	455	4	1500	3	398	1500	3	398	1500	3	398	1500	3	398	1500	3	398	1500	3	398	1500	3	398	1500	3	398	1500	3	398	1500
s	269	3	1600	6	674	1600	6	674	1600	6	674	1600	6	674	1600	6	674	1600	6	674	1600	6	674	1600	6	674	1600	6	674	1600
a	143	1	1700	1	50	1700	1	50	1700	1	50	1700	1	50	1700	1	50	1700	1	50	1700	1	50	1700	1	50	1700	1	50	1700
i	512	5	1800	3	295	1800	3	295	1800	3	295	1800	3	295	1800	3	295	1800	3	295	1800	3	295	1800	3	295	1800	3	295	1800
r	286	3	1900	3	202	1900	3	202	1900	3	202	1900	3	202	1900	3	202	1900	3	202	1900	3	202	1900	3	202	1900	3	202	1900
o	436	3	2000	1	143	2000	1	143	2000	1	143	2000	1	143	2000	1	143	2000	1	143	2000	1	143	2000	1	143	2000	1	143	2000
h	267	2	2100	0	0	2100	0	0	2100	0	0	2100	0	0	2100	0	0	2100	0	0	2100	0	0	2100	0	0	2100	0	0	2100
l	379	3	2200	0	0	2200	0	0	2200	0	0	2200	0	0	2200	0	0	2200	0	0	2200	0	0	2200	0	0	2200	0	0	2200
e	512	4	2300	1	150	2300	1	150	2300	1	150	2300	1	150	2300	1	150	2300	1	150	2300	1	150	2300	1	150	2300	1	150	2300
s	5,709	49		5,796	49		5,673	49	5,796	50		5,769	50	5,673	50		5,769	50	5,673	50		5,769	50	5,673	50		5,769	50	5,673	50
a	4,503	41		4,933	41		4,503	41	4,933	41		4,503	41	4,933	41		4,503	41	4,933	41		4,503	41	4,933	41		4,503	41	4,933	41
t	5,589	48		5,589	48		5,589	48	5,589	48		5,589	48	5,589	48		5,589	48	5,589	48		5,589	48	5,589	48		5,589	48	5,589	48

Reno-Tahoe International Airport

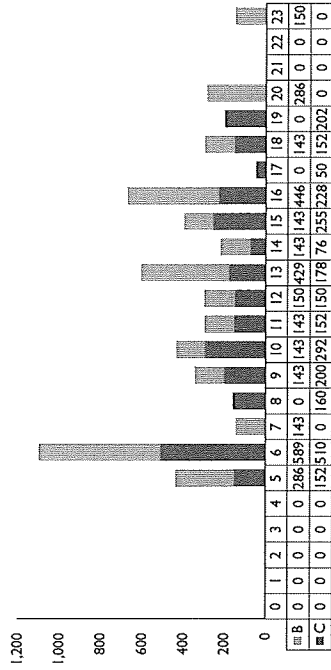
Actual Hourly Schedule - Flights and Seats

Friday, November 13, 2015

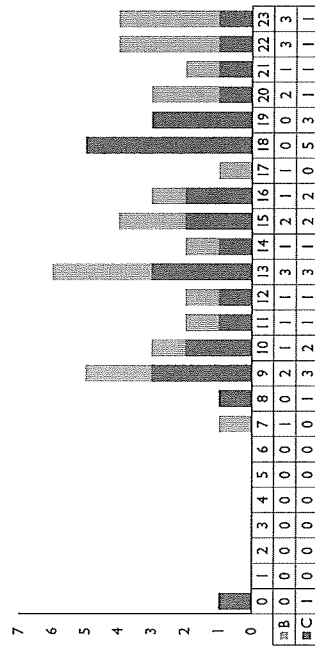
Hourly Departure Flights by Concourse



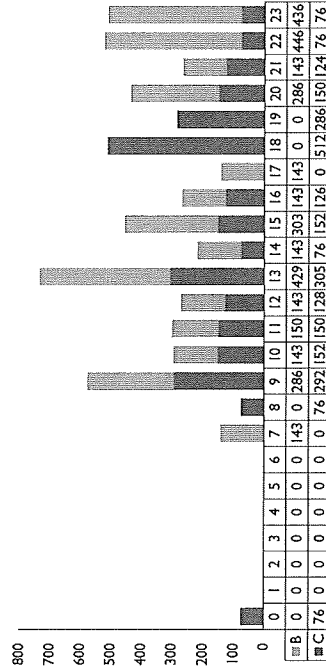
Hourly Departure Seats by Concourse



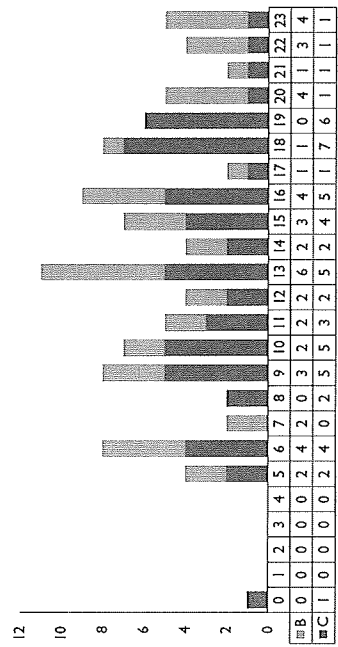
Hourly Arrival Flights by Concourse



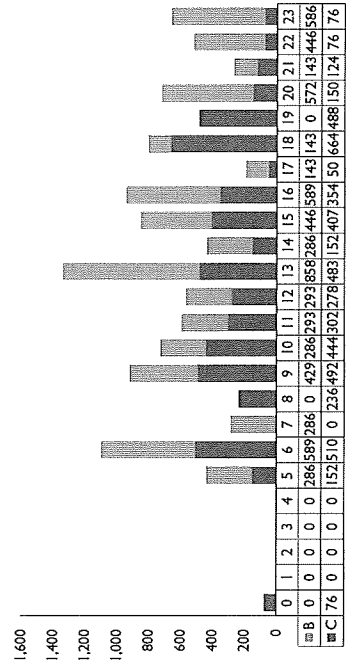
Hourly Arrival Seats by Concourse



Hourly Departure/Arrival Flights by Concourse



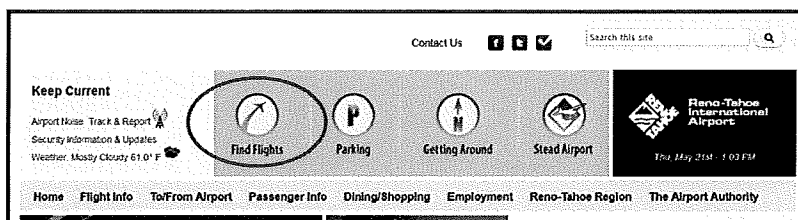
Hourly Departure/Arrival Seats by Concourse



How to search for Flights Online:

Reno-Tahoe International Airport (RNO) subscribes to an Online Searchable Flight tool that assists passengers in locating air service from any destination in the world to RNO vice versa. Follow these easy steps to start planning your flight today!

Visit renoairport.com and click on the "Find Flights" icon on the top left.



There are three ways to find flights...

A. Display ROUTES:

This will display all routings between your departure city and Reno-Tahoe International Airport.

1. Click on the upper right hand tab titled "Routes".
2. View city names by hovering your mouse over any dot on the map or by touching the city dot.
3. Click on or type in the destination you wish to travel to Reno-Tahoe from. "Connecting Flights" and "Include Code Shares" should be checked. "With Airline" should read "All Carriers".
4. Click "Search"

B. Display FLIGHTS:

This will display specific flights between your departure city and Reno-Tahoe International Airport. Direct flights (non-stop or same plane) and Connecting flights (one or multiple stops) will be listed.

1. Click on the upper right hand tab titled "Flights"
2. Type in the destination you wish to leave from.
3. Select the dates you wish to depart and return. You may choose a specific carrier, or select "All Carriers". "Connecting Flights" and "Include Code Shares" should be checked.
4. Click "Search"
5. Click on the Destination Tab at the bottom of the Map with the number of results in parenthesis.
6. Choose "Details" for the Flight that best suits your travel needs.
7. Book your flight via the airline's website at renoairport.com/flight-info/airlinesbook-flight

Routes from Atlanta to Reno

Online Searchable Flights

We're here to help you plan your trip whether you're traveling to or from Reno-Tahoe International Airport. Here are two useful ways to plan ahead:

1. Use the map below (allow a moment while it loads) and click on your destination or location.
2. Or use the table chart below the map and select the appropriate information in the fields provided

Routes
Flights

Flights from Atlanta to Reno

Routes
Flights

Leaving from: Going to:

Departing on: Returning on: With airline:

Connecting flights Non-Stop flights

Include codeshares Dates +/- 3 days

Direct or connection:


Direct Routes:

Connecting Routes:

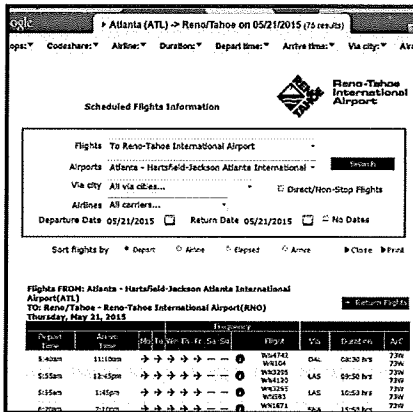
Atlanta (ATL) -> Reno/Tahoe on 05/21/2015 (75 results) Search

C. Display FLIGHT LIST

This will also display specific flights between your departure city and Reno-Tahoe International Airport.

1. Below the map, find the box titled "Scheduled Flights Information"
2. In the second box, choose the destination you would like to travel to RNO from.
3. "Via City" can be left as "All via cities". "Airlines" can be left as "All carriers".
4. Select the dates you wish to depart and return.
5. Click "Search"
6. Click on the  icon for Itinerary Details for the Flight that best suits your travel needs.

Flights from Atlanta to Reno



Scheduled Flights Information

Flights To Reno-Tahoe International Airport

Airports Atlanta - Hartsfield-Jackson Atlanta International

Via city All via cities... Direct/Non-Stop Flights

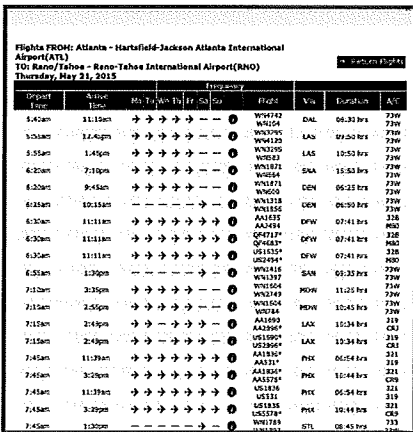
Airlines All carriers...

Departure Date 05/21/2015 Return Date 05/21/2015 No Dates

Sort flights by Depart Arrive Departed Arrive Close Filter

Depart Time	Arrive Time	Frequency	Flight	Via	Duration	AC
1:42am	11:00am	→ → → → →	WN172	DAL	06:30 hrs	73W
5:55am	12:45pm	→ → → → →	WN220	LAS	09:30 hrs	73W
5:55am	1:45pm	→ → → → →	WN225	LAS	10:53 hrs	73W
6:00am	2:10pm	→ → → → →	WN171	DCA	11:53 hrs	73W

Atlanta to Reno



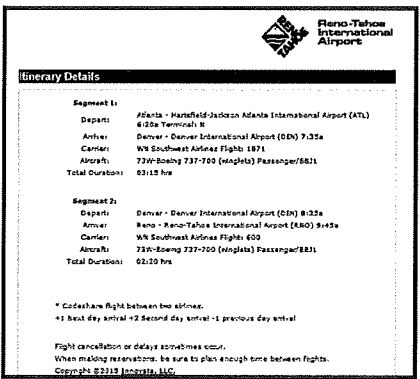
Scheduled Flights Information

Flights FROM: Atlanta - Hartsfield-Jackson Atlanta International Airport (ATL)

TO: Reno/Tahoe - Reno-Tahoe International Airport (RNO) Thursday, May 21, 2015

Depart Time	Arrive Time	Frequency	Flight	Via	Duration	AC
1:42am	11:00am	→ → → → →	WN172	DAL	06:30 hrs	73W
5:55am	12:45pm	→ → → → →	WN220	LAS	09:30 hrs	73W
5:55am	1:45pm	→ → → → →	WN225	LAS	10:53 hrs	73W
6:00am	2:10pm	→ → → → →	WN171	DCA	11:53 hrs	73W
6:20am	2:10pm	→ → → → →	WN182	SNA	11:53 hrs	73W
6:20am	2:10pm	→ → → → →	WN173	DEN	06:25 hrs	73W
6:20am	2:10pm	→ → → → →	WN174	DEN	06:30 hrs	73W
6:30am	11:11am	→ → → → →	WN155	DFW	07:41 hrs	319
6:30am	11:11am	→ → → → →	AA294	DFW	07:41 hrs	600
6:30am	11:11am	→ → → → →	Q4143	DFW	07:41 hrs	600
6:30am	11:11am	→ → → → →	US159	DFW	07:41 hrs	319
6:30am	11:11am	→ → → → →	US294	DFW	07:41 hrs	600
6:55am	1:30pm	→ → → → →	WN137	SAN	09:35 hrs	73W
7:02am	2:05pm	→ → → → →	WN141	MDW	11:25 hrs	73W
7:02am	2:05pm	→ → → → →	WN154	MDW	11:25 hrs	73W
7:02am	2:05pm	→ → → → →	WN178	MDW	10:45 hrs	319
7:02am	2:05pm	→ → → → →	AA193	LAX	10:34 hrs	319
7:02am	2:05pm	→ → → → →	AA296	LAX	10:34 hrs	601
7:02am	2:05pm	→ → → → →	US190	LAX	10:34 hrs	319
7:02am	2:05pm	→ → → → →	US296	LAX	10:34 hrs	601
7:45am	11:39am	→ → → → →	AA185	PHX	06:14 hrs	311
7:45am	11:39am	→ → → → →	AA311	PHX	06:14 hrs	311
7:45am	11:39am	→ → → → →	AA185	PHX	10:44 hrs	311
7:45am	11:39am	→ → → → →	AA329	PHX	10:44 hrs	311
7:45am	11:39am	→ → → → →	US176	PHX	06:54 hrs	311
7:45am	11:39am	→ → → → →	US177	PHX	06:54 hrs	311
7:45am	11:39am	→ → → → →	US188	PHX	10:44 hrs	311
7:45am	11:39am	→ → → → →	US178	PHX	10:44 hrs	311
7:45am	11:39am	→ → → → →	WN178	STL	08:45 hrs	733
7:45am	11:39am	→ → → → →	WN183	STL	08:45 hrs	733

Itinerary from Atlanta to Reno



Itinerary Details

Segment 1:
 Depart: Atlanta - Hartsfield-Jackson Atlanta International Airport (ATL) 6:02am Terminal: B
 Arrive: Denver - Denver International Airport (DEN) 7:35a
 Carrier: WN Southwest Airlines Flight: 1871
 Aircraft: 73W-Boeing 737-700 (Airplane) Passenger/881
 Total Duration: 02:13 hrs

Segment 2:
 Depart: Denver - Denver International Airport (DEN) 8:02a
 Arrive: Reno - Reno-Tahoe International Airport (RNO) 9:45a
 Carrier: WN Southwest Airlines Flight: 600
 Aircraft: 73W-Boeing 737-700 (Airplane) Passenger/881
 Total Duration: 02:20 hrs

* Codeshare flight between two airlines.
 +1 hour delay arrival +2 second day arrival -1 previous day arrival

Flight cancellation or delays sometimes occur.
 When making reservations, be sure to plan enough time between flights.
 Copyright © 2015 JetBlue, LLC

HOW TO BOOK FLIGHTS

Book your flight via the airline's website at renoairport.com/flight-info/airlinesbook-flight or visit one of these websites...

Airline Websites:

- Alaska - www.alaska-air.com
- Allegiant Air - www.allegiantair.com
- American - www.aa.com
- Delta - www.delta.com
- jetBlue - www.jetblue.com
- Southwest - www.southwest.com
- United - www.united.com
- US Airways - www.usairways.com
- Volaris - www.volaris.com

Examples of Online Travel Agencies:

- www.airfarewatchdog.com
- www.cheaptickets.com
- www.expedia.com
- www.hotwire.com
- www.kayak.com
- www.orbitz.com
- www.priceline.com
- www.travelocity.com
- www.travelzoo.com

Note: Southwest Airlines provides approximately 50 percent of the airline seats to/from Reno-Tahoe International Airport, but does not subscribe to any online travel agencies. Southwest Airlines' flights can only be booked at:

www.southwest.com or 1-800-I-FLY-SWA